

**DATASHEET**

**TMLHE Rabbit Polyclonal Antibody**

CAT. NO. APA14647

**KEY FEATURES**

Target	TMLHE	Source / Host	Rabbit
Reactivity	Human, Mouse, Rat	Clonality	Polyclonal
Applications	WB, IF/ICC	Conjugation	Unconjugated
Form / Buffer	Liquid in 0.42% Potassium phosphate, 0.87% Sodium chloride, pH 7.3, 30% glycerol, and 0.01% sodium azide.	Storage	at-20°C

**BACKGROUND**

Converts trimethyllysine (TML) into hydroxytrimethyllysine (HTML) into hydroxytrimethyllysine (HTML) .

**APPLICATION**

To ensure optimal assay performance, AREX recommends conducting reagent titration tailored to each testing system for optimal detection results.

WB	1:500 - 1:2000
IF/ICC	1:50 - 1:200

\*Results are sample-specific. Please refer to your local assay conditions and test parameters for reference.

**PRODUCT OVERVIEW**

Description	Rabbit polyclonal antibody to TMLHE
Specificity	Recognizes endogenous levels of TMLHE protein.
Antibody Type	Primary antibody
Immunogen	Recombinant fusion protein of human TMLHE
Purification	The antibody was purified by immunogen affinity chromatography.
Molecular Weight	Predicted: 38; Observed: 50 kD
Form/Buffer	Liquid in 0.42% Potassium phosphate, 0.87% Sodium chloride, pH 7.3, 30% glycerol, and 0.01% sodium azide.
Alternative Names	TMLH; Trimethyllysine dioxygenase mitochondrial; Epsilon-trimethyllysine 2-oxoglutarate dioxygenase; Epsilon-trimethyllysine hydroxylase; TML hydroxylase; TML-alpha-ketoglutarate dioxygenase; TML dioxygenase; TMLD
Gene Symbol	TMLHE
Entrez Gene	55217(Human); 192289(Mouse); 170898(Rat)
SwissProt	Q9NVH6(Human); Q91ZE0(Mouse); Q91ZW6(Rat)

\*AREX continuously optimizes our products. Webpage content may not reflect the latest updates. For inquiries, please contact [info@arexbio.com](mailto:info@arexbio.com) or your local distributor.

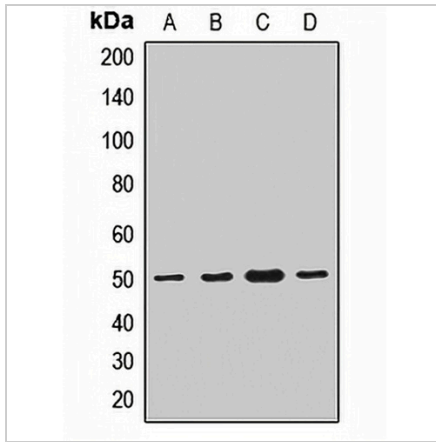
\*Clone Number, Reactivity, Source/Host and Clonality can be found in the product name and Key Features section above.

**DATASHEET**

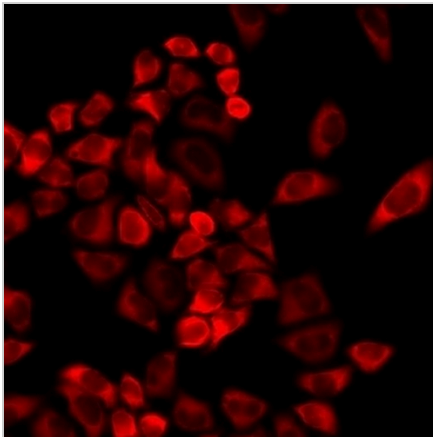
**TMLHE Rabbit Polyclonal Antibody**

CAT. NO. APA14647

**DATA**



Western blot analysis of TMLHE expression in HT29 (A), SKOV3 (B), mouse heart (C), rat liver (D) whole cell lysates. (Predicted band size: 38; 41; 42; 44; 46; 49; 50 kD; Observed band size: 50 kD)



Immunofluorescent analysis of TMLHE staining in MCF7 cells. Formalin-fixed cells were permeabilized with 0.1% Triton X-100 in TBS for 5-10 minutes and blocked with 3% BSA-PBS for 30 minutes at room temperature. Cells were probed with the primary antibody in 3% BSA-PBS and incubated overnight at 4 °C in a humidified chamber. Cells were washed with PBST and incubated with a DyLight 594-conjugated secondary antibody (red) in PBS at room temperature in the dark.

**STORAGE**

Store at 4°C short term. For long term storage, store at -20°C, avoiding freeze/thaw cycles.

**NOTE**

For Research Use Only. Not for diagnostic, therapeutics, prophylactic or in vivo use.