

DATASHEET

Karyopherin alpha-5 Rabbit Polyclonal Antibody

CAT. NO. APA14649

KEY FEATURES

| | | | |
|---------------|---|---------------|--------------------|
| Target | Karyopherin alpha-5 | Source / Host | Rabbit |
| Reactivity | Human, Mouse, Rat | Clonality | Polyclonal |
| Applications | WB | Conjugation | Unconjugated |
| Form / Buffer | Liquid in 0.42% Potassium phosphate, 0.87% Sodium chloride, pH 7.3, 30% glycerol, and 0.01% sodium azide. | | Storage at-20°C |

BACKGROUND

Functions in nuclear protein import as an adapter protein for nuclear receptor KPNB1. Binds specifically and directly to substrates containing either a simple or bipartite NLS motif. Docking of the importin/substrate complex to the nuclear pore complex (NPC) is mediated by KPNB1 through binding to nucleoporin FxFG repeats and the complex is subsequently translocated through the pore by an energy requiring, Ran-dependent mechanism. At the nucleoplasmic side of the NPC, Ran binds to importin-beta and the three components separate and importin-alpha and -beta are re-exported from the nucleus to the cytoplasm where GTP hydrolysis releases Ran from importin.

APPLICATION

To ensure optimal assay performance, AREX recommends conducting reagent titration tailored to each testing system for optimal detection results.

| | |
|----|----------------|
| WB | 1:500 - 1:2000 |
|----|----------------|

*Results are sample-specific. Please refer to your local assay conditions and test parameters for reference.

PRODUCT OVERVIEW

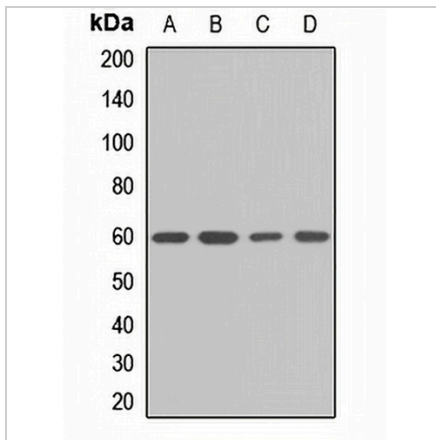
| | |
|-------------------|---|
| Description | Rabbit polyclonal antibody to Karyopherin alpha-5 |
| Specificity | Recognizes endogenous levels of Karyopherin alpha-5 protein. |
| Antibody Type | Primary antibody |
| Immunogen | Recombinant fusion protein of human Karyopherin alpha-5 |
| Purification | The antibody was purified by immunogen affinity chromatography. |
| Molecular Weight | Predicted: 60 kD; Observed: 60 kD |
| Form/Buffer | Liquid in 0.42% Potassium phosphate, 0.87% Sodium chloride, pH 7.3, 30% glycerol, and 0.01% sodium azide. |
| Alternative Names | Importin subunit alpha-6; Karyopherin subunit alpha-5 |
| Gene Symbol | KPNA5 |
| Entrez Gene | 3841(Human); 294392(Rat) |
| SwissProt | O15131(Human); Q56R16(Rat) |

*AREX continuously optimizes our products. Webpage content may not reflect the latest updates. For inquiries, please contact info@arexbio.com or your local distributor.

*Clone Number, Reactivity, Source/Host and Clonality can be found in the product name and Key Features section above.

DATASHEET**Karyopherin alpha-5 Rabbit Polyclonal Antibody**

CAT. NO. APA14649

DATA

Western blot analysis of Karyopherin alpha-5 expression in SKOV3 (A), HepG2 (B), mouse heart (C), rat liver (D) whole cell lysates. (Predicted band size: 60 kD; Observed band size: 60 kD)

STORAGE

Store at 4°C short term. For long term storage, store at -20°C, avoiding freeze/thaw cycles.

NOTE

For Research Use Only. Not for diagnostic, therapeutics, prophylactic or in vivo use.