

DATASHEET

GLK Rabbit Polyclonal Antibody

CAT. NO. APA14653

KEY FEATURES

Target	GLK	Source / Host	Rabbit
Reactivity	Human	Clonality	Polyclonal
Applications	WB, IHC	Conjugation	Unconjugated
Form / Buffer	Liquid in 0.42% Potassium phosphate, 0.87% Sodium chloride, pH 7.3, 30% glycerol, and 0.01% sodium azide.		Storage at -20°C

BACKGROUND

Serine/threonine kinase that plays a role in the response to environmental stress. Appears to act upstream of the JUN N-terminal pathway. Activator of the Hippo signaling pathway which plays a pivotal role in organ size control and tumor suppression by restricting proliferation and promoting apoptosis. MAP4Ks act in parallel to and are partially redundant with STK3/MST2 and STK4/MST2 in the phosphorylation and activation of LATS1/2, and establish MAP4Ks as components of the expanded Hippo pathway.

APPLICATION

To ensure optimal assay performance, AREX recommends conducting reagent titration tailored to each testing system for optimal detection results.

WB	1:500 - 1:2000
IHC	1:50 - 1:200

*Results are sample-specific. Please refer to your local assay conditions and test parameters for reference.

PRODUCT OVERVIEW

Description	Rabbit polyclonal antibody to GLK
Specificity	Recognizes endogenous levels of GLK protein.
Antibody Type	Primary antibody
Immunogen	Recombinant fusion protein of human GLK
Purification	The antibody was purified by immunogen affinity chromatography.
Molecular Weight	Predicted: 101 kD; Observed: 101 kD
Form/Buffer	Liquid in 0.42% Potassium phosphate, 0.87% Sodium chloride, pH 7.3, 30% glycerol, and 0.01% sodium azide.
Alternative Names	RAB8IPL1; Mitogen-activated protein kinase kinase kinase kinase 3; Germinal center kinase-related protein kinase; GLK; MAPK/ERK kinase kinase kinase 3; MEK kinase kinase 3; MEKKK 3
Gene Symbol	MAP4K3
Entrez Gene	8491(Human); 170920(Rat)
SwissProt	Q8IVH8(Human); Q99JP0(Mouse); Q924I2(Rat)

*AREX continuously optimizes our products. Webpage content may not reflect the latest updates. For inquiries, please contact info@arexbio.com or your local distributor.

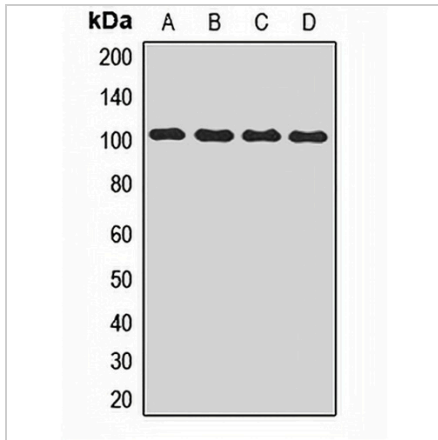
*Clone Number, Reactivity, Source/Host and Clonality can be found in the product name and Key Features section above.

DATASHEET

GLK Rabbit Polyclonal Antibody

CAT. NO. APA14653

DATA



Western blot analysis of GLK expression in MCF7 (A), HepG2 (B), mouse lung (C), rat brain (D) whole cell lysates. (Predicted band size: 101 kD; Observed band size: 101 kD)

Data 2

Immunohistochemical analysis of GLK staining in human brain formalin fixed paraffin embedded tissue section. The section was pre-treated using heat mediated antigen retrieval with sodium citrate buffer (pH 6.0). The section was then incubated with the antibody at room temperature and detected using an HRP conjugated compact polymer system. DAB was used as the chromogen. The section was then counterstained with haematoxylin and mounted with DPX.

STORAGE

Store at 4°C short term. For long term storage, store at -20°C, avoiding freeze/thaw cycles.

NOTE

For Research Use Only. Not for diagnostic, therapeutics, prophylactic or in vivo use.