

DATASHEET

CSRP2BP Rabbit Polyclonal Antibody

CAT. NO. APA14656

KEY FEATURES

Target	CSRP2BP	Source / Host	Rabbit
Reactivity	Human, Mouse	Clonality	Polyclonal
Applications	WB, IF/ICC	Conjugation	Unconjugated
Form / Buffer	Liquid in 0.42% Potassium phosphate, 0.87% Sodium chloride, pH 7.3, 30% glycerol, and 0.01% sodium azide.		Storage at -20°C

BACKGROUND

Component of the ATAC complex, a complex with histone acetyltransferase activity on histones H3 and H4. May function as a scaffold for the ATAC complex to promote ATAC complex stability. Has also weak histone acetyltransferase activity toward histone H4. Required for the normal progression through G1 and G2/M phases of the cell cycle.

APPLICATION

To ensure optimal assay performance, AREX recommends conducting reagent titration tailored to each testing system for optimal detection results.

WB	1:500 - 1:1000
IF/ICC	1:50 - 1:200

*Results are sample-specific. Please refer to your local assay conditions and test parameters for reference.

PRODUCT OVERVIEW

Description	Rabbit polyclonal antibody to CSRP2BP
Specificity	Recognizes endogenous levels of CSRP2BP protein.
Antibody Type	Primary antibody
Immunogen	Recombinant fusion protein of human CSRP2BP
Purification	The antibody was purified by immunogen affinity chromatography.
Molecular Weight	Predicted: 74; Observed: 89 kD
Form/Buffer	Liquid in 0.42% Potassium phosphate, 0.87% Sodium chloride, pH 7.3, 30% glycerol, and 0.01% sodium azide.
Alternative Names	Cysteine-rich protein 2-binding protein; CSRP2-binding protein; ADA2A-containing complex subunit 2; ATAC2; CRP2-binding partner; CRP2BP
Gene Symbol	CSRP2BP
Entrez Gene	57325(Human); 228714(Mouse)
SwissProt	Q9H8E8(Human); Q8CID0(Mouse)

*AREX continuously optimizes our products. Webpage content may not reflect the latest updates. For inquiries, please contact info@arexbio.com or your local distributor.

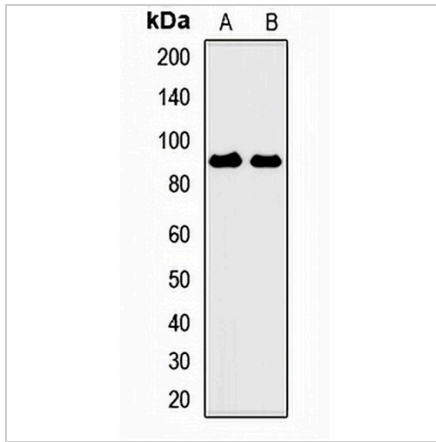
*Clone Number, Reactivity, Source/Host and Clonality can be found in the product name and Key Features section above.

DATASHEET

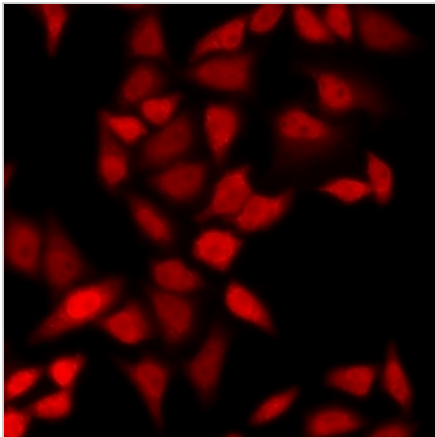
CSRP2BP Rabbit Polyclonal Antibody

CAT. NO. APA14656

DATA



Western blot analysis of CSRP2BP expression in HL60 (A), mouse brain (B) whole cell lysates. (Predicted band size: 74; 88 kD; Observed band size: 89 kD)



Immunofluorescent analysis of CSRP2BP staining in A549 cells. Formalin-fixed cells were permeabilized with 0.1% Triton X-100 in TBS for 5-10 minutes and blocked with 3% BSA-PBS for 30 minutes at room temperature. Cells were probed with the primary antibody in 3% BSA-PBS and incubated overnight at 4 °C in a humidified chamber. Cells were washed with PBST and incubated with a DyLight 594-conjugated secondary antibody (red) in PBS at room temperature in the dark.

STORAGE

Store at 4°C short term. For long term storage, store at -20°C, avoiding freeze/thaw cycles.

NOTE

For Research Use Only. Not for diagnostic, therapeutics, prophylactic or in vivo use.