

DATASHEET

CARD12 Rabbit Polyclonal Antibody

CAT. NO. APA14657

KEY FEATURES

Target	CARD12	Source / Host	Rabbit
Reactivity	Human, Mouse, Rat	Clonality	Polyclonal
Applications	WB, IF/ICC	Conjugation	Unconjugated
Form / Buffer	Liquid in 0.42% Potassium phosphate, 0.87% Sodium chloride, pH 7.3, 30% glycerol, and 0.01% sodium azide.		Storage at -20°C

BACKGROUND

Key component of inflammasomes that indirectly senses specific proteins from pathogenic bacteria and fungi and responds by assembling an inflammasome complex that promotes caspase-1 activation, cytokine production and macrophage pyroptosis . The NLRC4 inflammasome is activated as part of the innate immune response to a range of intracellular bacteria .

APPLICATION

To ensure optimal assay performance, AREX recommends conducting reagent titration tailored to each testing system for optimal detection results.

WB	1:500 - 1:1000
IF/ICC	1:50 - 1:200

*Results are sample-specific. Please refer to your local assay conditions and test parameters for reference.

PRODUCT OVERVIEW

Description	Rabbit polyclonal antibody to CARD12
Specificity	Recognizes endogenous levels of CARD12 protein.
Antibody Type	Primary antibody
Immunogen	Recombinant fusion protein of human CARD12
Purification	The antibody was purified by immunogen affinity chromatography.
Molecular Weight	Predicted: 116 kD; Observed: 110 kD
Form/Buffer	Liquid in 0.42% Potassium phosphate, 0.87% Sodium chloride, pH 7.3, 30% glycerol, and 0.01% sodium azide.
Alternative Names	CARD12; CLAN; CLAN1; IPAF; NLR family CARD domain-containing protein 4; CARD, LRR, and NACHT-containing protein; Clan protein; Caspase recruitment domain-containing protein 12; Ice protease-activating factor; Ipaf
Gene Symbol	NLRC4
Entrez Gene	58484(Human); 268973(Mouse); 298784(Rat)
SwissProt	Q9NPP4(Human); Q3UP24(Mouse); F1M649(Rat)

*AREX continuously optimizes our products. Webpage content may not reflect the latest updates. For inquiries, please contact info@arex.bio or your local distributor.

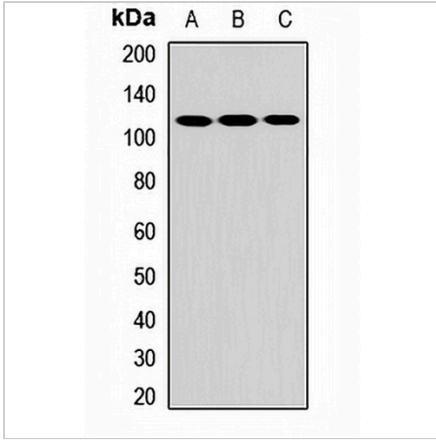
*Clone Number, Reactivity, Source/Host and Clonality can be found in the product name and Key Features section above.

DATASHEET

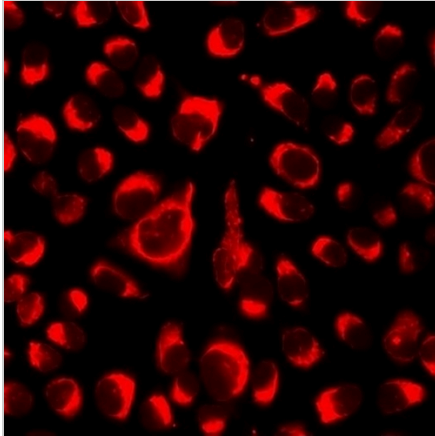
CARD12 Rabbit Polyclonal Antibody

CAT. NO. APA14657

DATA



Western blot analysis of CARD12 expression in MCF7 (A), mouse heart (B), rat kidney (C) whole cell lysates. (Predicted band size: 116 kD; Observed band size: 110 kD)



Immunofluorescent analysis of CARD12 staining in A549 cells. Formalin-fixed cells were permeabilized with 0.1% Triton X-100 in TBS for 5-10 minutes and blocked with 3% BSA-PBS for 30 minutes at room temperature. Cells were probed with the primary antibody in 3% BSA-PBS and incubated overnight at 4 °C in a humidified chamber. Cells were washed with PBST and incubated with a DyLight 594-conjugated secondary antibody (red) in PBS at room temperature in the dark.

STORAGE

Store at 4°C short term. For long term storage, store at -20°C, avoiding freeze/thaw cycles.

NOTE

For Research Use Only. Not for diagnostic, therapeutics, prophylactic or in vivo use.