

DATASHEET

NAT-15 Rabbit Polyclonal Antibody

CAT. NO. APA14658

KEY FEATURES

Target	NAT-15	Source / Host	Rabbit
Reactivity	Human, Mouse, Rat	Clonality	Polyclonal
Applications	WB, IHC, IF/ICC	Conjugation	Unconjugated
Form / Buffer	Liquid in 0.42% Potassium phosphate, 0.87% Sodium chloride, pH 7.3, 30% glycerol, and 0.01% sodium azide.		Storage at -20°C

BACKGROUND

N-alpha-acetyltransferase that specifically mediates the acetylation of N-terminal residues of the transmembrane proteins, with a strong preference for N-termini facing the cytosol. Displays N-terminal acetyltransferase activity towards a range of N-terminal sequences including those starting with Met-Lys, Met-Val, Met-Ala and Met-Met. Required for normal chromosomal segregation during anaphase. May also show histone acetyltransferase activity; such results are however unclear in vivo and would require additional experimental evidences.

APPLICATION

To ensure optimal assay performance, AREX recommends conducting reagent titration tailored to each testing system for optimal detection results.

WB	1:500 - 1:2000
IHC	1:50 - 1:200
IF/ICC	1:50 - 1:200

*Results are sample-specific. Please refer to your local assay conditions and test parameters for reference.

PRODUCT OVERVIEW

Description	Rabbit polyclonal antibody to NAT-15
Specificity	Recognizes endogenous levels of NAT-15 protein.
Antibody Type	Primary antibody
Immunogen	Recombinant fusion protein of human NAT-15
Purification	The antibody was purified by immunogen affinity chromatography.
Molecular Weight	Predicted: 19; Observed: 27 kD
Form/Buffer	Liquid in 0.42% Potassium phosphate, 0.87% Sodium chloride, pH 7.3, 30% glycerol, and 0.01% sodium azide.
Alternative Names	HAT4; NAT15; N-alpha-acetyltransferase 60; Histone acetyltransferase type B protein 4; HAT4; N-acetyltransferase 15; NatF catalytic subunit
Gene Symbol	NAA60
Entrez Gene	79903(Human); 74763(Mouse); 363545(Rat)
SwissProt	Q9H7X0(Human); Q9DBU2(Mouse); Q3MHC1(Rat)

*AREX continuously optimizes our products. Webpage content may not reflect the latest updates. For inquiries, please contact info@arexbio.com or your local distributor.

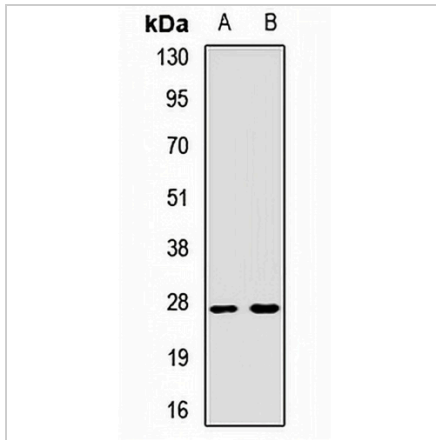
*Clone Number, Reactivity, Source/Host and Clonality can be found in the product name and Key Features section above.

DATASHEET

NAT-15 Rabbit Polyclonal Antibody

CAT. NO. APA14658

DATA



Western blot analysis of NAT-15 expression in mouse brain (A), rat brain (B) whole cell lysates. (Predicted band size: 19; 20; 27; 28 kD; Observed band size: 27 kD)

Data 2

Immunohistochemical analysis of NAT-15 staining in human colon cancer formalin fixed paraffin embedded tissue section. The section was pre-treated using heat mediated antigen retrieval with sodium citrate buffer (pH 6.0). The section was then incubated with the antibody at room temperature and detected using an HRP conjugated compact polymer system. DAB was used as the chromogen. The section was then counterstained with haematoxylin and mounted with DPX.

STORAGE

Store at 4°C short term. For long term storage, store at -20°C, avoiding freeze/thaw cycles.

NOTE

For Research Use Only. Not for diagnostic, therapeutics, prophylactic or in vivo use.