

DATASHEET

RASSF5 Rabbit Polyclonal Antibody

CAT. NO. APA14659

KEY FEATURES

Target	RASSF5	Source / Host	Rabbit
Reactivity	Human, Mouse, Rat	Clonality	Polyclonal
Applications	WB	Conjugation	Unconjugated
Form / Buffer	Liquid in 0.42% Potassium phosphate, 0.87% Sodium chloride, pH 7.3, 30% glycerol, and 0.01% sodium azide.		Storage at-20°C

BACKGROUND

Potential tumor suppressor. Seems to be involved in lymphocyte adhesion by linking RAP1A activation upon T-cell receptor or chemokine stimulation to integrin activation. Isoform 2 stimulates lymphocyte polarization and the patch-like distribution of ITGAL/LFA-1, resulting in an enhanced adhesion to ICAM1. Together with RAP1A may participate in regulation of microtubule growth. The association of isoform 2 with activated RAP1A is required for directional movement of endothelial cells during wound healing. May be involved in regulation of Ras apoptotic function. The RASSF5-STK4/MST1 complex may mediate HRAS and KRAS induced apoptosis.

APPLICATION

To ensure optimal assay performance, AREX recommends conducting reagent titration tailored to each testing system for optimal detection results.

WB	1:500 - 1:2000
----	----------------

*Results are sample-specific. Please refer to your local assay conditions and test parameters for reference.

PRODUCT OVERVIEW

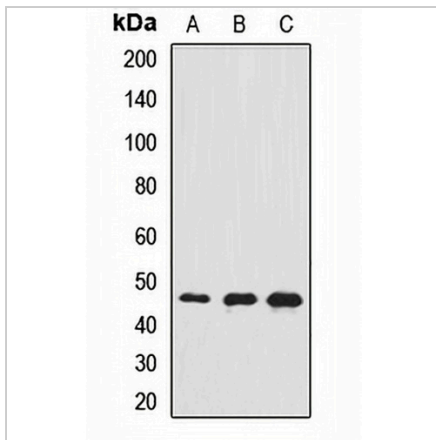
Description	Rabbit polyclonal antibody to RASSF5
Specificity	Recognizes endogenous levels of RASSF5 protein.
Antibody Type	Primary antibody
Immunogen	Recombinant fusion protein of human RASSF5
Purification	The antibody was purified by immunogen affinity chromatography.
Molecular Weight	Predicted: 47 kD; Observed: 36-52 kD
Form/Buffer	Liquid in 0.42% Potassium phosphate, 0.87% Sodium chloride, pH 7.3, 30% glycerol, and 0.01% sodium azide.
Alternative Names	NORE1; RAPL; Ras association domain-containing protein 5; New ras effector 1; Regulator for cell adhesion and polarization enriched in lymphoid tissues; RAPL
Gene Symbol	RASSF5
Entrez Gene	83593(Human); 54354(Mouse); 54355(Rat)
SwissProt	Q8WWW0(Human); Q5EBH1(Mouse); O35141(Rat)

*AREX continuously optimizes our products. Webpage content may not reflect the latest updates. For inquiries, please contact info@arexbio.com or your local distributor.

*Clone Number, Reactivity, Source/Host and Clonality can be found in the product name and Key Features section above.

DATASHEET**RASSF5 Rabbit Polyclonal Antibody**

CAT. NO. APA14659

DATA

Western blot analysis of RASSF5 expression in A549 (A), Jurkat (B), mouse brain (C) whole cell lysates. (Predicted band size: 47 kD; Observed band size: 36-52 kD)

STORAGE

Store at 4°C short term. For long term storage, store at -20°C, avoiding freeze/thaw cycles.

NOTE

For Research Use Only. Not for diagnostic, therapeutics, prophylactic or in vivo use.