

DATASHEET

SPIN2B Rabbit Polyclonal Antibody

CAT. NO. APA14661

KEY FEATURES

Target	SPIN2B	Source / Host	Rabbit
Reactivity	Human, Mouse, Rat	Clonality	Polyclonal
Applications	WB, IHC	Conjugation	Unconjugated
Form / Buffer	Liquid in 0.42% Potassium phosphate, 0.87% Sodium chloride, pH 7.3, 30% glycerol, and 0.01% sodium azide.	Storage	at-20°C

BACKGROUND

Involved in the regulation of cell cycle progression, this activity is related to the inhibition of apoptosis following the removal of essential growth factors . Exhibits H3K4me3-binding activity .

APPLICATION

To ensure optimal assay performance, AREX recommends conducting reagent titration tailored to each testing system for optimal detection results.

WB	1:500 - 1:2000
IHC	1:50 - 1:200

*Results are sample-specific. Please refer to your local assay conditions and test parameters for reference.

PRODUCT OVERVIEW

Description	Rabbit polyclonal antibody to SPIN2B
Specificity	Recognizes endogenous levels of SPIN2B protein.
Antibody Type	Primary antibody
Immunogen	Recombinant fusion protein of human SPIN2B
Purification	The antibody was purified by immunogen affinity chromatography.
Molecular Weight	Predicted: 29 kD; Observed: 29 kD
Form/Buffer	Liquid in 0.42% Potassium phosphate, 0.87% Sodium chloride, pH 7.3, 30% glycerol, and 0.01% sodium azide.
Alternative Names	SPIN2; Spindlin-2B; Spindlin-like protein 2B; SPIN-2; SPIN-2B
Gene Symbol	SPIN2B
Entrez Gene	474343(Human)
SwissProt	Q9BPZ2(Human)

*AREX continuously optimizes our products. Webpage content may not reflect the latest updates. For inquiries, please contact info@arexbio.com or your local distributor.

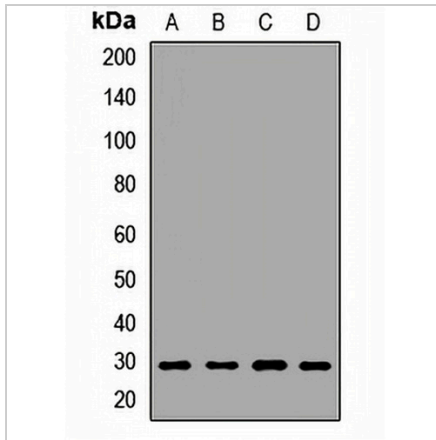
*Clone Number, Reactivity, Source/Host and Clonality can be found in the product name and Key Features section above.

DATASHEET

SPIN2B Rabbit Polyclonal Antibody

CAT. NO. APA14661

DATA



Western blot analysis of SPIN2B expression in MCF7 (A), mouse liver (B), mouse brain (C), rat kidney (D) whole cell lysates. (Predicted band size: 29 kD; Observed band size: 29 kD)

Data 2

Immunohistochemical analysis of SPIN2B staining in human kidney formalin fixed paraffin embedded tissue section. The section was pre-treated using heat mediated antigen retrieval with sodium citrate buffer (pH 6.0). The section was then incubated with the antibody at room temperature and detected using an HRP conjugated compact polymer system. DAB was used as the chromogen. The section was then counterstained with haematoxylin and mounted with DPX.

STORAGE

Store at 4°C short term. For long term storage, store at -20°C, avoiding freeze/thaw cycles.

NOTE

For Research Use Only. Not for diagnostic, therapeutics, prophylactic or in vivo use.