

DATASHEET

IFRD1 Rabbit Polyclonal Antibody

CAT. NO. APA14663

KEY FEATURES

Target	IFRD1	Source / Host	Rabbit
Reactivity	Human, Mouse, Rat	Clonality	Polyclonal
Applications	WB, IHC	Conjugation	Unconjugated
Form / Buffer	Liquid in 0.42% Potassium phosphate, 0.87% Sodium chloride, pH 7.3, 30% glycerol, and 0.01% sodium azide.		Storage at -20°C

BACKGROUND

Could play a role in regulating gene activity in the proliferative and/or differentiative pathways induced by NGF. May be an autocrine factor that attenuates or amplifies the initial ligand-induced signal .

APPLICATION

To ensure optimal assay performance, AREX recommends conducting reagent titration tailored to each testing system for optimal detection results.

WB	1:500 - 1:1000
IHC	1:50 - 1:200

*Results are sample-specific. Please refer to your local assay conditions and test parameters for reference.

PRODUCT OVERVIEW

Description	Rabbit polyclonal antibody to IFRD1
Specificity	Recognizes endogenous levels of IFRD1 protein.
Antibody Type	Primary antibody
Immunogen	Recombinant fusion protein of human IFRD1
Purification	The antibody was purified by immunogen affinity chromatography.
Molecular Weight	Predicted: 45; Observed: 50 kD
Form/Buffer	Liquid in 0.42% Potassium phosphate, 0.87% Sodium chloride, pH 7.3, 30% glycerol, and 0.01% sodium azide.
Alternative Names	Interferon-related developmental regulator 1; Nerve growth factor-inducible protein PC4
Gene Symbol	IFRD1
Entrez Gene	3475(Human); 15982(Mouse); 29596(Rat)
SwissProt	O00458(Human); P19182(Mouse); P20695(Rat)

*AREX continuously optimizes our products. Webpage content may not reflect the latest updates. For inquiries, please contact info@arexbio.com or your local distributor.

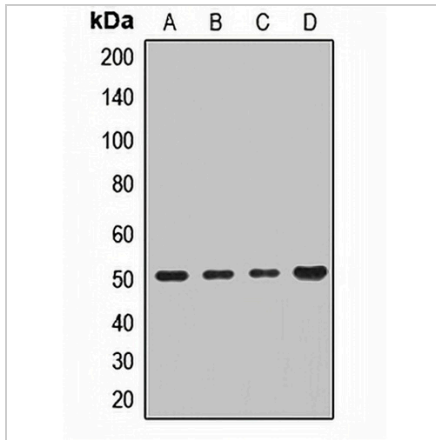
*Clone Number, Reactivity, Source/Host and Clonality can be found in the product name and Key Features section above.

DATASHEET

IFRD1 Rabbit Polyclonal Antibody

CAT. NO. APA14663

DATA



Western blot analysis of IFRD1 expression in HeLa (A), Raji (B), mouse lung (C), rat brain (D) whole cell lysates. (Predicted band size: 45; 50 kD; Observed band size: 50 kD)

Data 2

Immunohistochemical analysis of IFRD1 staining in human lung formalin fixed paraffin embedded tissue section. The section was pre-treated using heat mediated antigen retrieval with sodium citrate buffer (pH 6.0). The section was then incubated with the antibody at room temperature and detected using an HRP conjugated compact polymer system. DAB was used as the chromogen. The section was then counterstained with haematoxylin and mounted with DPX.

STORAGE

Store at 4°C short term. For long term storage, store at -20°C, avoiding freeze/thaw cycles.

NOTE

For Research Use Only. Not for diagnostic, therapeutics, prophylactic or in vivo use.