

**DATASHEET**

**SH3GL1 Rabbit Polyclonal Antibody**

CAT. NO. APA14665

**KEY FEATURES**

Target	SH3GL1	Source / Host	Rabbit
Reactivity	Human, Mouse, Rat, Monkey	Clonality	Polyclonal
Applications	WB, IHC	Conjugation	Unconjugated
Form / Buffer	Liquid in 0.42% Potassium phosphate, 0.87% Sodium chloride, pH 7.3, 30% glycerol, and 0.01% sodium azide.		Storage at -20°C

**BACKGROUND**

Implicated in endocytosis. May recruit other proteins to membranes with high curvature .

**APPLICATION**

To ensure optimal assay performance, AREX recommends conducting reagent titration tailored to each testing system for optimal detection results.

WB	1:500 - 1:2000
IHC	1:50 - 1:200

\*Results are sample-specific. Please refer to your local assay conditions and test parameters for reference.

**PRODUCT OVERVIEW**

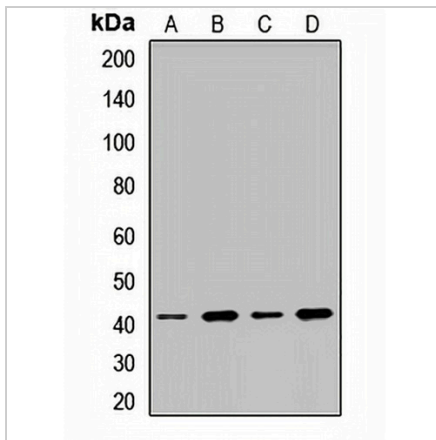
Description	Rabbit polyclonal antibody to SH3GL1
Specificity	Recognizes endogenous levels of SH3GL1 protein.
Antibody Type	Primary antibody
Immunogen	Recombinant fusion protein of human SH3GL1
Purification	The antibody was purified by immunogen affinity chromatography.
Molecular Weight	Predicted: 34; Observed: 41 kD
Form/Buffer	Liquid in 0.42% Potassium phosphate, 0.87% Sodium chloride, pH 7.3, 30% glycerol, and 0.01% sodium azide.
Alternative Names	CNSA1; SH3D2B; Endophilin-A2; EEN fusion partner of MLL; Endophilin-2; Extra eleven-nineteen leukemia fusion gene protein; EEN; SH3 domain protein 2B; SH3 domain-containing GRB2-like protein 1
Gene Symbol	SH3GL1
Entrez Gene	6455(Human); 20405(Mouse); 81922(Rat)
SwissProt	Q99961(Human); Q62419(Mouse); O35964(Rat)

\*AREX continuously optimizes our products. Webpage content may not reflect the latest updates. For inquiries, please contact [info@arexbio.com](mailto:info@arexbio.com) or your local distributor.

\*Clone Number, Reactivity, Source/Host and Clonality can be found in the product name and Key Features section above.

**DATASHEET****SH3GL1 Rabbit Polyclonal Antibody**

CAT. NO. APA14665

**DATA**

Western blot analysis of SH3GL1 expression in HepG2 (A), MCF7 (B), COS7 (C), mouse brain (D) whole cell lysates. (Predicted band size: 34; 36; 41 kD; Observed band size: 41 kD)

**STORAGE**

Store at 4°C short term. For long term storage, store at -20°C, avoiding freeze/thaw cycles.

**NOTE**

For Research Use Only. Not for diagnostic, therapeutics, prophylactic or in vivo use.