

DATASHEET

SULT1E1 Rabbit Polyclonal Antibody

CAT. NO. APA14667

KEY FEATURES

Target	SULT1E1	Source / Host	Rabbit
Reactivity	Human, Mouse, Rat	Clonality	Polyclonal
Applications	WB, IF/ICC	Conjugation	Unconjugated
Form / Buffer	Liquid in 0.42% Potassium phosphate, 0.87% Sodium chloride, pH 7.3, 30% glycerol, and 0.01% sodium azide.		Storage at -20°C

BACKGROUND

Sulfotransferase that utilizes 3'-phospho-5'-adenylyl sulfate (PAPS) as sulfonate donor to catalyze the sulfate conjugation of estradiol and estrone as sulfonate donor to catalyze the sulfate conjugation of estradiol and estrone . Is a key enzyme in estrogen homeostasis, the sulfation of estrogens leads to their inactivation. Also sulfates dehydroepiandrosterone (DHEA), pregnenolone, (24S)-hydroxycholesterol and xenobiotic compounds like ethinylestradiol, equalenin, diethyl stilbesterol and 1-naphthol at significantly lower efficiency . Does not sulfonate cortisol, testosterone and dopamine . May play a role in gut microbiota-host metabolic interaction. O-sulfonates 4-ethylphenol (4-EP), a dietary tyrosine-derived metabolite produced by gut bacteria.

APPLICATION

To ensure optimal assay performance, AREX recommends conducting reagent titration tailored to each testing system for optimal detection results.

WB	1:500 - 1:2000
IF/ICC	1:50 - 1:200

*Results are sample-specific. Please refer to your local assay conditions and test parameters for reference.

PRODUCT OVERVIEW

Description	Rabbit polyclonal antibody to SULT1E1
Specificity	Recognizes endogenous levels of SULT1E1 protein.
Antibody Type	Primary antibody
Immunogen	Recombinant fusion protein of human SULT1E1
Purification	The antibody was purified by immunogen affinity chromatography.
Molecular Weight	Predicted: 35 kD; Observed: 35 kD
Form/Buffer	Liquid in 0.42% Potassium phosphate, 0.87% Sodium chloride, pH 7.3, 30% glycerol, and 0.01% sodium azide.
Alternative Names	STE; Estrogen sulfotransferase; EST-1; Sulfotransferase 1E1; ST1E1; Sulfotransferase, estrogen-preferring
Gene Symbol	SULT1E1
Entrez Gene	6783(Human)
SwissProt	P49888(Human); P49891(Mouse); P52844(Rat)

*AREX continuously optimizes our products. Webpage content may not reflect the latest updates. For inquiries, please contact info@arexbio.com or your local distributor.

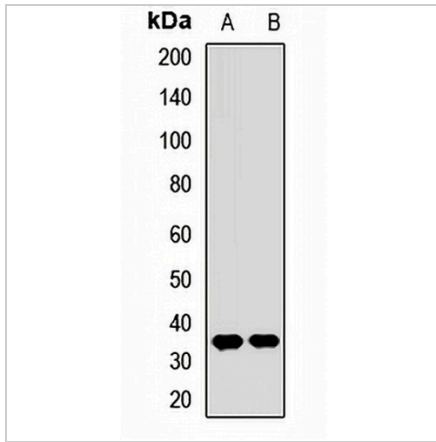
*Clone Number, Reactivity, Source/Host and Clonality can be found in the product name and Key Features section above.

DATASHEET

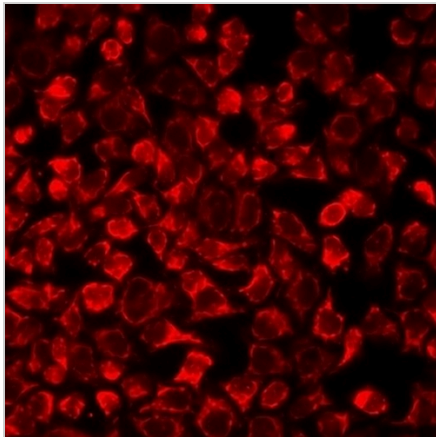
SULT1E1 Rabbit Polyclonal Antibody

CAT. NO. APA14667

DATA



Western blot analysis of SULT1E1 expression in mouse liver (A), rat liver (B) whole cell lysates. (Predicted band size: 35 kD; Observed band size: 35 kD)



Immunofluorescent analysis of SULT1E1 staining in A549 cells. Formalin-fixed cells were permeabilized with 0.1% Triton X-100 in TBS for 5-10 minutes and blocked with 3% BSA-PBS for 30 minutes at room temperature. Cells were probed with the primary antibody in 3% BSA-PBS and incubated overnight at 4 °C in a humidified chamber. Cells were washed with PBST and incubated with a DyLight 594-conjugated secondary antibody (red) in PBS at room temperature in the dark.

STORAGE

Store at 4°C short term. For long term storage, store at -20°C, avoiding freeze/thaw cycles.

NOTE

For Research Use Only. Not for diagnostic, therapeutics, prophylactic or in vivo use.