

DATASHEET

PCDHA13 Rabbit Polyclonal Antibody

CAT. NO. APA14672

KEY FEATURES

Target	PCDHA13	Source / Host	Rabbit
Reactivity	Human, Mouse, Rat	Clonality	Polyclonal
Applications	WB	Conjugation	Unconjugated
Form / Buffer	Liquid in 0.42% Potassium phosphate, 0.87% Sodium chloride, pH 7.3, 30% glycerol, and 0.01% sodium azide.		Storage at-20°C

BACKGROUND

Potential calcium-dependent cell-adhesion protein. May be involved in the establishment and maintenance of specific neuronal connections in the brain.

APPLICATION

To ensure optimal assay performance, AREX recommends conducting reagent titration tailored to each testing system for optimal detection results.

WB	1:500 - 1:2000
----	----------------

*Results are sample-specific. Please refer to your local assay conditions and test parameters for reference.

PRODUCT OVERVIEW

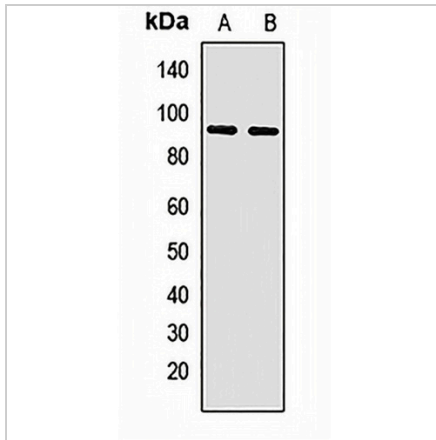
Description	Rabbit polyclonal antibody to PCDHA13
Specificity	Recognizes endogenous levels of PCDHA13 protein.
Antibody Type	Primary antibody
Immunogen	Recombinant fusion protein of human PCDHA13
Purification	The antibody was purified by immunogen affinity chromatography.
Molecular Weight	Predicted: 87; Observed: 90 kD
Form/Buffer	Liquid in 0.42% Potassium phosphate, 0.87% Sodium chloride, pH 7.3, 30% glycerol, and 0.01% sodium azide.
Alternative Names	CNR55; Protocadherin alpha-13; PCDH-alpha-13
Gene Symbol	PCDHA13
Entrez Gene	56136(Human)
SwissProt	Q9Y5I0(Human)

*AREX continuously optimizes our products. Webpage content may not reflect the latest updates. For inquiries, please contact info@arexbio.com or your local distributor.

*Clone Number, Reactivity, Source/Host and Clonality can be found in the product name and Key Features section above.

DATASHEET**PCDHA13 Rabbit Polyclonal Antibody**

CAT. NO. APA14672

DATA

Western blot analysis of PCDHA13 expression in mouse brain (A), rat kidney (B) whole cell lysates. (Predicted band size: 87; 102 kD; Observed band size: 90 kD)

STORAGE

Store at 4°C short term. For long term storage, store at -20°C, avoiding freeze/thaw cycles.

NOTE

For Research Use Only. Not for diagnostic, therapeutics, prophylactic or in vivo use.