

DATASHEET

RAB1B Rabbit Polyclonal Antibody

CAT. NO. APA14680

KEY FEATURES

Target	RAB1B	Source / Host	Rabbit
Reactivity	Human, Mouse, Rat	Clonality	Polyclonal
Applications	WB, IF/ICC	Conjugation	Unconjugated
Form / Buffer	Liquid in 0.42% Potassium phosphate, 0.87% Sodium chloride, pH 7.3, 30% glycerol, and 0.01% sodium azide.		Storage at -20°C

BACKGROUND

The small GTPases Rab are key regulators of intracellular membrane trafficking, from the formation of transport vesicles to their fusion with membranes. Rabs cycle between an inactive GDP-bound form and an active GTP-bound form that is able to recruit to membranes different set of downstream effectors directly responsible for vesicle formation, movement, tethering and fusion. Plays a role in the initial events of the autophagic vacuole development which take place at specialized regions of the endoplasmic reticulum. Regulates vesicular transport between the endoplasmic reticulum and successive Golgi compartments. Required to modulate the compacted morphology of the Golgi. Promotes the recruitment of lipid phosphatase MTMR6 to the endoplasmic reticulum-Golgi intermediate compartment.

APPLICATION

To ensure optimal assay performance, AREX recommends conducting reagent titration tailored to each testing system for optimal detection results.

WB	1:500 - 1:1000
IF/ICC	1:50 - 1:200

*Results are sample-specific. Please refer to your local assay conditions and test parameters for reference.

PRODUCT OVERVIEW

Description	Rabbit polyclonal antibody to RAB1B
Specificity	Recognizes endogenous levels of RAB1B protein.
Antibody Type	Primary antibody
Immunogen	Recombinant fusion protein of human RAB1B
Purification	The antibody was purified by immunogen affinity chromatography.
Molecular Weight	Predicted: 22 kD; Observed: 22 kD
Form/Buffer	Liquid in 0.42% Potassium phosphate, 0.87% Sodium chloride, pH 7.3, 30% glycerol, and 0.01% sodium azide.
Alternative Names	Ras-related protein Rab-1B
Gene Symbol	RAB1B
Entrez Gene	81876(Human); 76308(Mouse)
SwissProt	Q9H0U4(Human); Q9D1G1(Mouse); P10536(Rat)

*AREX continuously optimizes our products. Webpage content may not reflect the latest updates. For inquiries, please contact info@arexbio.com or your local distributor.

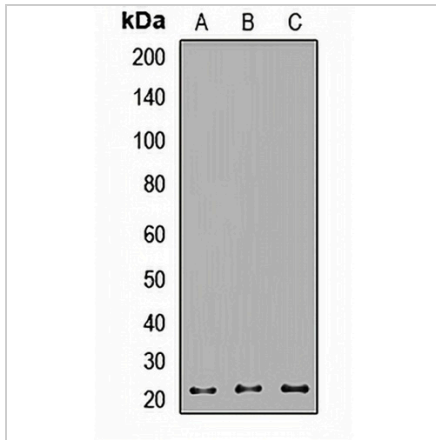
*Clone Number, Reactivity, Source/Host and Clonality can be found in the product name and Key Features section above.

DATASHEET

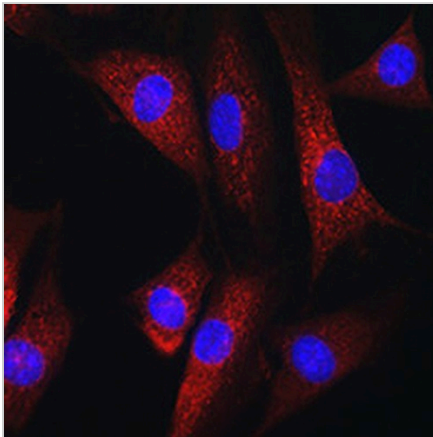
RAB1B Rabbit Polyclonal Antibody

CAT. NO. APA14680

DATA



Western blot analysis of RAB1B expression in SKOV3 (A), MCF7 (B), mouse brain (C) whole cell lysates. (Predicted band size: 22 kD; Observed band size: 22 kD)



Immunofluorescent analysis of RAB1B staining in NIH3T3 cells. Formalin-fixed cells were permeabilized with 0.1% Triton X-100 in TBS for 5-10 minutes and blocked with 3% BSA-PBS for 30 minutes at room temperature. Cells were probed with the primary antibody in 3% BSA-PBS and incubated overnight at 4 °C in a humidified chamber. Cells were washed with PBST and incubated with a AREX® Fluor 594-conjugated secondary antibody (red) in PBS at room temperature in the dark. DAPI was used to stain the cell nuclei (blue).

STORAGE

Store at 4°C short term. For long term storage, store at -20°C, avoiding freeze/thaw cycles.

NOTE

For Research Use Only. Not for diagnostic, therapeutics, prophylactic or in vivo use.