

DATASHEET

TLF Rabbit Polyclonal Antibody

CAT. NO. APA14688

KEY FEATURES

Target	TLF	Source / Host	Rabbit
Reactivity	Human, Mouse, Rat	Clonality	Polyclonal
Applications	WB, IF/ICC	Conjugation	Unconjugated
Form / Buffer	Liquid in 0.42% Potassium phosphate, 0.87% Sodium chloride, pH 7.3, 30% glycerol, and 0.01% sodium azide.		Storage at -20°C

BACKGROUND

Part of a specialized transcription system that mediates the transcription of most ribosomal proteins through the 5'-TCT-3' motif which is a core promoter element at these genes. Seems to also mediate the transcription of NF1. Does not bind the TATA box.

APPLICATION

To ensure optimal assay performance, AREX recommends conducting reagent titration tailored to each testing system for optimal detection results.

WB	1:500 - 1:2000
IF/ICC	1:50 - 1:200

*Results are sample-specific. Please refer to your local assay conditions and test parameters for reference.

PRODUCT OVERVIEW

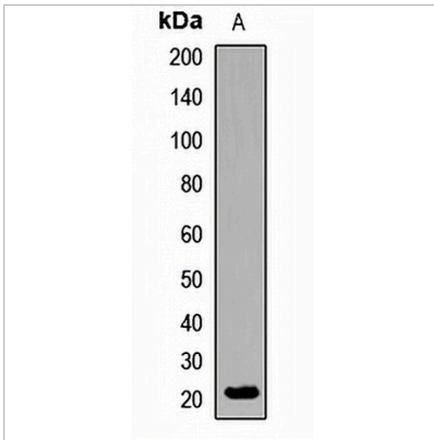
Description	Rabbit polyclonal antibody to TLF
Specificity	Recognizes endogenous levels of TLF protein.
Antibody Type	Primary antibody
Immunogen	Recombinant fusion protein of human TLF
Purification	The antibody was purified by immunogen affinity chromatography.
Molecular Weight	Predicted: 20 kD; Observed: 21 kD
Form/Buffer	Liquid in 0.42% Potassium phosphate, 0.87% Sodium chloride, pH 7.3, 30% glycerol, and 0.01% sodium azide.
Alternative Names	TLF; TLP; TLP21; TRF2; TRP; TATA box-binding protein-like protein 1; TBP-like protein 1; 21 kDa TBP-like protein; Second TBP of unique DNA protein; STUD; TATA box-binding protein-related factor 2; TBP-related factor 2; TBP-like factor; TBP-related protein
Gene Symbol	TBPL1
Entrez Gene	9519(Human); 237336(Mouse)
SwissProt	P62380(Human); P62340(Mouse)

*AREX continuously optimizes our products. Webpage content may not reflect the latest updates. For inquiries, please contact info@arexbio.com or your local distributor.

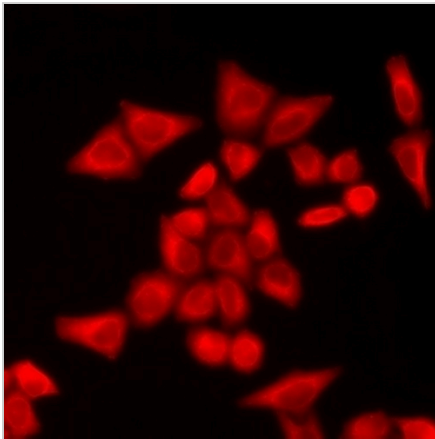
*Clone Number, Reactivity, Source/Host and Clonality can be found in the product name and Key Features section above.

DATASHEET**TLF Rabbit Polyclonal Antibody**

CAT. NO. APA14688

DATA

Western blot analysis of TLF expression in HEK293T (A) whole cell lysates. (Predicted band size: 20 kD; Observed band size: 21 kD)



Immunofluorescent analysis of TLF staining in A549 cells. Formalin-fixed cells were permeabilized with 0.1% Triton X-100 in TBS for 5-10 minutes and blocked with 3% BSA-PBS for 30 minutes at room temperature. Cells were probed with the primary antibody in 3% BSA-PBS and incubated overnight at 4 °C in a humidified chamber. Cells were washed with PBST and incubated with a DyLight 594-conjugated secondary antibody (red) in PBS at room temperature in the dark.

STORAGE

Store at 4°C short term. For long term storage, store at -20°C, avoiding freeze/thaw cycles.

NOTE

For Research Use Only. Not for diagnostic, therapeutics, prophylactic or in vivo use.