

DATASHEET

NLP Rabbit Polyclonal Antibody

CAT. NO. APA14689

KEY FEATURES

Target	NLP	Source / Host	Rabbit
Reactivity	Human, Mouse	Clonality	Polyclonal
Applications	WB	Conjugation	Unconjugated
Form / Buffer	Liquid in 0.42% Potassium phosphate, 0.87% Sodium chloride, pH 7.3, 30% glycerol, and 0.01% sodium azide.		Storage at -20°C

BACKGROUND

Involved in the microtubule organization in interphase cells. Overexpression induces the fragmentation of the Golgi, and causes lysosomes to disperse toward the cell periphery; it also interferes with mitotic spindle assembly. Involved in vesicle transport in photoreceptor cells. May play a role in ovarian carcinogenesis.

APPLICATION

To ensure optimal assay performance, AREX recommends conducting reagent titration tailored to each testing system for optimal detection results.

WB	1:500 - 1:2000
----	----------------

*Results are sample-specific. Please refer to your local assay conditions and test parameters for reference.

PRODUCT OVERVIEW

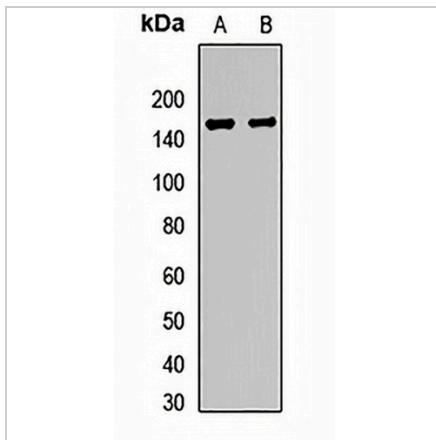
Description	Rabbit polyclonal antibody to NLP
Specificity	Recognizes endogenous levels of NLP protein.
Antibody Type	Primary antibody
Immunogen	Recombinant fusion protein of human NLP
Purification	The antibody was purified by immunogen affinity chromatography.
Molecular Weight	Predicted: 156 kD; Observed: 160 kD
Form/Buffer	Liquid in 0.42% Potassium phosphate, 0.87% Sodium chloride, pH 7.3, 30% glycerol, and 0.01% sodium azide.
Alternative Names	KIAA0980; NLP; Ninein-like protein
Gene Symbol	NINL
Entrez Gene	22981(Human); 78177(Mouse)
SwissProt	Q9Y2I6(Human); Q6ZQ12(Mouse)

*AREX continuously optimizes our products. Webpage content may not reflect the latest updates. For inquiries, please contact info@arexbio.com or your local distributor.

*Clone Number, Reactivity, Source/Host and Clonality can be found in the product name and Key Features section above.

DATASHEET**NLP Rabbit Polyclonal Antibody**

CAT. NO. APA14689

DATA

Western blot analysis of NLP expression in A549 (A), mouse kidney (B) whole cell lysates. (Predicted band size: 156 kD; Observed band size: 160 kD)

STORAGE

Store at 4°C short term. For long term storage, store at -20°C, avoiding freeze/thaw cycles.

NOTE

For Research Use Only. Not for diagnostic, therapeutics, prophylactic or in vivo use.