

**DATASHEET**

**DIMT1 Rabbit Polyclonal Antibody**

CAT. NO. APA14691

**KEY FEATURES**

Target	DIMT1	Source / Host	Rabbit
Reactivity	Human, Mouse	Clonality	Polyclonal
Applications	WB, IHC	Conjugation	Unconjugated
Form / Buffer	Liquid in 0.42% Potassium phosphate, 0.87% Sodium chloride, pH 7.3, 30% glycerol, and 0.01% sodium azide.		Storage at -20°C

**BACKGROUND**

Specifically dimethylates two adjacent adenosines in the loop of a conserved hairpin near the 3'-end of 18S rRNA in the 40S particle. Involved in the pre-rRNA processing steps leading to small-subunit rRNA production independently of its RNA-modifying catalytic activity. Part of the small subunit (SSU) processome, first precursor of the small eukaryotic ribosomal subunit. During the assembly of the SSU processome in the nucleolus, many ribosome biogenesis factors, an RNA chaperone and ribosomal proteins associate with the nascent pre-rRNA and work in concert to generate RNA folding, modifications, rearrangements and cleavage as well as targeted degradation of pre-ribosomal RNA by the RNA exosome.

**APPLICATION**

To ensure optimal assay performance, AREX recommends conducting reagent titration tailored to each testing system for optimal detection results.

WB	1:500 - 1:2000
IHC	1:50 - 1:200

\*Results are sample-specific. Please refer to your local assay conditions and test parameters for reference.

**PRODUCT OVERVIEW**

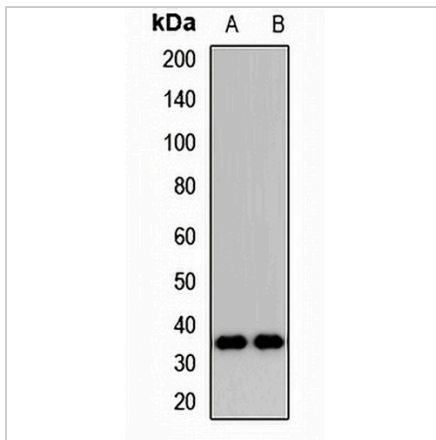
Description	Rabbit polyclonal antibody to DIMT1
Specificity	Recognizes endogenous levels of DIMT1 protein.
Antibody Type	Primary antibody
Immunogen	Recombinant fusion protein of human DIMT1
Purification	The antibody was purified by immunogen affinity chromatography.
Molecular Weight	Predicted: 35 kD; Observed: 35 kD
Form/Buffer	Liquid in 0.42% Potassium phosphate, 0.87% Sodium chloride, pH 7.3, 30% glycerol, and 0.01% sodium azide.
Alternative Names	DIMT1L; Probable dimethyladenosine transferase; DIM1 dimethyladenosine transferase 1 homolog; DIM1 dimethyladenosine transferase 1-like; Probable 18S rRNA (adenine(1779)-N(6)/adenine(1780)-N(6))-dimethyltransferase; Probable 18S rRNA dimethylase; Probable S-adenosylmethionine-6-N',N'-adenosyl(rRNA) dimethyltransferase
Gene Symbol	DIMT1
Entrez Gene	27292(Human); 66254(Mouse)
SwissProt	Q9UNQ2(Human); Q9D0D4(Mouse)

\*AREX continuously optimizes our products. Webpage content may not reflect the latest updates. For inquiries, please contact [info@arexbio.com](mailto:info@arexbio.com) or your local distributor.

\*Clone Number, Reactivity, Source/Host and Clonality can be found in the product name and Key Features section above.

**DATASHEET****DIMT1 Rabbit Polyclonal Antibody**

CAT. NO. APA14691

**DATA**

Western blot analysis of DIMT1 expression in MCF7 (A), mouse testis (B) whole cell lysates. (Predicted band size: 35 kD; Observed band size: 35 kD)

**STORAGE**

Store at 4°C short term. For long term storage, store at -20°C, avoiding freeze/thaw cycles.

**NOTE**

For Research Use Only. Not for diagnostic, therapeutics, prophylactic or in vivo use.