

DATASHEET

TSARG2 Rabbit Polyclonal Antibody

CAT. NO. APA14694

KEY FEATURES

Target	TSARG2	Source / Host	Rabbit
Reactivity	Human, Mouse, Rat	Clonality	Polyclonal
Applications	WB	Conjugation	Unconjugated
Form / Buffer	Liquid in 0.42% Potassium phosphate, 0.87% Sodium chloride, pH 7.3, 30% glycerol, and 0.01% sodium azide.		Storage at -20°C

BACKGROUND

May play a role in apoptosis regulation.

APPLICATION

To ensure optimal assay performance, AREX recommends conducting reagent titration tailored to each testing system for optimal detection results.

WB	1:500 - 1:1000
----	----------------

*Results are sample-specific. Please refer to your local assay conditions and test parameters for reference.

PRODUCT OVERVIEW

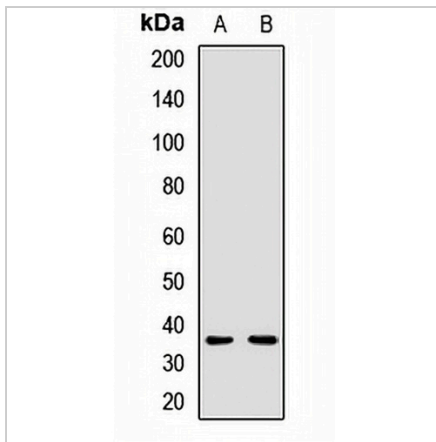
Description	Rabbit polyclonal antibody to TSARG2
Specificity	Recognizes endogenous levels of TSARG2 protein.
Antibody Type	Primary antibody
Immunogen	Recombinant fusion protein of human TSARG2
Purification	The antibody was purified by immunogen affinity chromatography.
Molecular Weight	Predicted: 34 kD; Observed: 34 kD
Form/Buffer	Liquid in 0.42% Potassium phosphate, 0.87% Sodium chloride, pH 7.3, 30% glycerol, and 0.01% sodium azide.
Alternative Names	TSARG2; Spermatogenesis-associated protein 4; Testis and spermatogenesis cell-related protein 2; Testis spermatocyte apoptosis-related gene 2 protein
Gene Symbol	SPATA4
Entrez Gene	132851(Human); 69281(Mouse)
SwissProt	Q8NEY3(Human); Q8K3V1(Mouse)

*AREX continuously optimizes our products. Webpage content may not reflect the latest updates. For inquiries, please contact info@arexbio.com or your local distributor.

*Clone Number, Reactivity, Source/Host and Clonality can be found in the product name and Key Features section above.

DATASHEET**TSARG2 Rabbit Polyclonal Antibody**

CAT. NO. APA14694

DATA

Western blot analysis of TSARG2 expression in mouse heart (A), rat heart (B) whole cell lysates. (Predicted band size: 34 kD; Observed band size: 34 kD)

STORAGE

Store at 4°C short term. For long term storage, store at -20°C, avoiding freeze/thaw cycles.

NOTE

For Research Use Only. Not for diagnostic, therapeutics, prophylactic or in vivo use.