

DATASHEET

ChREBP Rabbit Polyclonal Antibody

CAT. NO. APA14698

KEY FEATURES

Target	ChREBP	Source / Host	Rabbit
Reactivity	Human, Mouse	Clonality	Polyclonal
Applications	WB	Conjugation	Unconjugated
Form / Buffer	Liquid in 0.42% Potassium phosphate, 0.87% Sodium chloride, pH 7.3, 30% glycerol, and 0.01% sodium azide.		Storage at -20°C

BACKGROUND

Glucose-responsive transcription activator that regulates fatty acid synthesis and glycolysis. Key determinant of systemic insulin sensitivity and glucose homeostasis. Important for the expression of fatty acid synthetic enzymes, including PC/Pcx, APOC4/Acl, ACACA/Acc1 and FASN/Fas . Important for glucose-induced expression of L-type pyruvate kinase/PKLR . Binds to the canonical and non-canonical E box DNA sequences 5'-CACGTG-3' and 5'-CACGCG-3' . May also act as a transcriptional repressor .

APPLICATION

To ensure optimal assay performance, AREX recommends conducting reagent titration tailored to each testing system for optimal detection results.

WB	1:500 - 1:1000
----	----------------

*Results are sample-specific. Please refer to your local assay conditions and test parameters for reference.

PRODUCT OVERVIEW

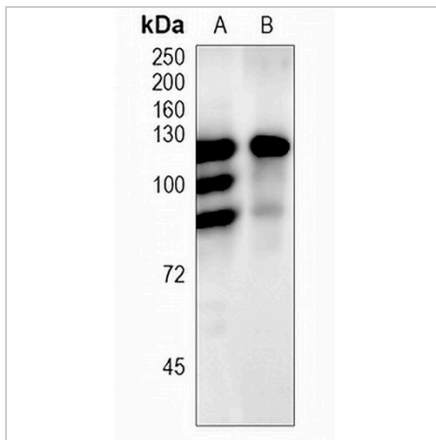
Description	Rabbit polyclonal antibody to ChREBP
Specificity	Recognizes endogenous levels of ChREBP protein.
Antibody Type	Primary antibody
Immunogen	Recombinant fusion protein of human ChREBP
Purification	The antibody was purified by immunogen affinity chromatography.
Molecular Weight	Predicted: 62; Observed: 110; 93; 78 kD
Form/Buffer	Liquid in 0.42% Potassium phosphate, 0.87% Sodium chloride, pH 7.3, 30% glycerol, and 0.01% sodium azide.
Alternative Names	BHLHD14; MIO; WBSCR14; Carbohydrate-responsive element-binding protein; ChREBP; Class D basic helix-loop-helix protein 14; bHLHd14; MLX interactor; MLX-interacting protein-like; WS basic-helix-loop-helix leucine zipper protein; WS-bHLH; Williams-Beuren syndrome chromosomal region 14 protein
Gene Symbol	MLXIPL
Entrez Gene	51085(Human); 58805(Mouse)
SwissProt	Q9NP71(Human); Q99MZ3(Mouse)

*AREX continuously optimizes our products. Webpage content may not reflect the latest updates. For inquiries, please contact info@arexbio.com or your local distributor.

*Clone Number, Reactivity, Source/Host and Clonality can be found in the product name and Key Features section above.

DATASHEET**ChREBP Rabbit Polyclonal Antibody**

CAT. NO. APA14698

DATA

Western blot analysis of ChREBP expression in K562 (A), HUT78 (B) whole cell lysates.
(Predicted band size: 62; 78; 90; 92; 93 kD; Observed band size: 110; 93; 78 kD)

STORAGE

Store at 4°C short term. For long term storage, store at -20°C, avoiding freeze/thaw cycles.

NOTE

For Research Use Only. Not for diagnostic, therapeutics, prophylactic or in vivo use.