

DATASHEET

C4BP alpha Rabbit Polyclonal Antibody

CAT. NO. APA14700

KEY FEATURES

Target	C4BP alpha	Source / Host	Rabbit
Reactivity	Human, Mouse, Rat	Clonality	Polyclonal
Applications	WB, IHC	Conjugation	Unconjugated
Form / Buffer	Liquid in 0.42% Potassium phosphate, 0.87% Sodium chloride, pH 7.3, 30% glycerol, and 0.01% sodium azide.		Storage at-20°C

BACKGROUND

Controls the classical pathway of complement activation. It binds as a cofactor to C3b/C4b inactivator (C3bINA), which then hydrolyzes the complement fragment C4b. It also accelerates the degradation of the C4bC2a complex (C3 convertase) by dissociating the complement fragment C2a. Alpha chain binds C4b. It also interacts with anticoagulant protein S and with serum amyloid P component.

APPLICATION

To ensure optimal assay performance, AREX recommends conducting reagent titration tailored to each testing system for optimal detection results.

WB	1:500 - 1:2000
IHC	1:50 - 1:200

*Results are sample-specific. Please refer to your local assay conditions and test parameters for reference.

PRODUCT OVERVIEW

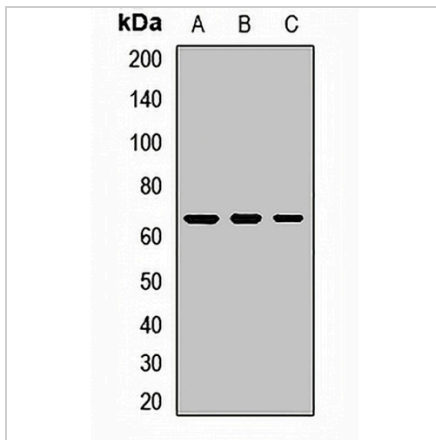
Description	Rabbit polyclonal antibody to C4BP alpha
Specificity	Recognizes endogenous levels of C4BP alpha protein.
Antibody Type	Primary antibody
Immunogen	Recombinant fusion protein of human C4BP alpha
Purification	The antibody was purified by immunogen affinity chromatography.
Molecular Weight	Predicted: 67 kD; Observed: 70 kD
Form/Buffer	Liquid in 0.42% Potassium phosphate, 0.87% Sodium chloride, pH 7.3, 30% glycerol, and 0.01% sodium azide.
Alternative Names	C4BP; C4b-binding protein alpha chain; C4bp; Proline-rich protein; PRP
Gene Symbol	C4BPA
Entrez Gene	722(Human); 12269(Mouse)
SwissProt	P04003(Human); P08607(Mouse); Q63514(Rat)

*AREX continuously optimizes our products. Webpage content may not reflect the latest updates. For inquiries, please contact info@arexbio.com or your local distributor.

*Clone Number, Reactivity, Source/Host and Clonality can be found in the product name and Key Features section above.

DATASHEET**C4BP alpha Rabbit Polyclonal Antibody**

CAT. NO. APA14700

DATA

Western blot analysis of C4BP alpha expression in HepG2 (A), HeLa (B), mouse liver (C) whole cell lysates. (Predicted band size: 67 kD; Observed band size: 70 kD)

STORAGE

Store at 4°C short term. For long term storage, store at -20°C, avoiding freeze/thaw cycles.

NOTE

For Research Use Only. Not for diagnostic, therapeutics, prophylactic or in vivo use.