

DATASHEET

KDM5B Rabbit Polyclonal Antibody

CAT. NO. APA14706

KEY FEATURES

Target	KDM5B	Source / Host	Rabbit
Reactivity	Human, Mouse	Clonality	Polyclonal
Applications	WB, IF/ICC	Conjugation	Unconjugated
Form / Buffer	Liquid in 0.42% Potassium phosphate, 0.87% Sodium chloride, pH 7.3, 30% glycerol, and 0.01% sodium azide.		Storage at-20°C

BACKGROUND

Histone demethylase that demethylates 'Lys-4' of histone H3, thereby playing a central role in histone code . Does not demethylate histone H3 'Lys-9' or H3 'Lys-27'. Demethylates trimethylated, dimethylated and monomethylated H3 'Lys-4'. Acts as a transcriptional corepressor for FOXG1B and PAX9. Favors the proliferation of breast cancer cells by repressing tumor suppressor genes such as BRCA1 and HOXA5 . In contrast, may act as a tumor suppressor for melanoma. Represses the CLOCK-BMAL1 heterodimer-mediated transcriptional activation of the core clock component PER2 .

APPLICATION

To ensure optimal assay performance, AREX recommends conducting reagent titration tailored to each testing system for optimal detection results.

WB	1:500 - 1:2000
IF/ICC	1:50 - 1:200

*Results are sample-specific. Please refer to your local assay conditions and test parameters for reference.

PRODUCT OVERVIEW

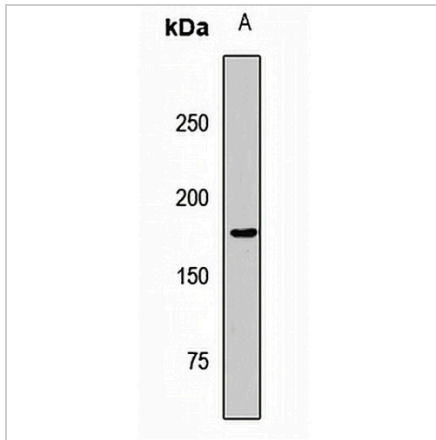
Description	Rabbit polyclonal antibody to KDM5B
Specificity	Recognizes endogenous levels of KDM5B protein.
Antibody Type	Primary antibody
Immunogen	Recombinant fusion protein of human KDM5B
Purification	The antibody was purified by immunogen affinity chromatography.
Molecular Weight	Predicted: 175; Observed: 176 kD
Form/Buffer	Liquid in 0.42% Potassium phosphate, 0.87% Sodium chloride, pH 7.3, 30% glycerol, and 0.01% sodium azide.
Alternative Names	JARID1B; PLU1; RBBP2H1; Lysine-specific demethylase 5B; Cancer/testis antigen 31; CT31; Histone demethylase JARID1B; Jumonji/ARID domain-containing protein 1B; PLU-1; Retinoblastoma-binding protein 2 homolog 1; RBP2-H1
Gene Symbol	KDM5B
Entrez Gene	10765(Human)
SwissProt	Q9UGL1(Human)

*AREX continuously optimizes our products. Webpage content may not reflect the latest updates. For inquiries, please contact info@arexbio.com or your local distributor.

*Clone Number, Reactivity, Source/Host and Clonality can be found in the product name and Key Features section above.

DATASHEET**KDM5B Rabbit Polyclonal Antibody**

CAT. NO. APA14706

DATA

Western blot analysis of KDM5B expression in HeLa (A) whole cell lysates. (Predicted band size: 175; 179 kD; Observed band size: 176 kD)

STORAGE

Store at 4°C short term. For long term storage, store at -20°C, avoiding freeze/thaw cycles.

NOTE

For Research Use Only. Not for diagnostic, therapeutics, prophylactic or in vivo use.