

DATASHEET

ELMOD2 Rabbit Polyclonal Antibody

CAT. NO. APA14709

KEY FEATURES

Target	ELMOD2	Source / Host	Rabbit
Reactivity	Human, Mouse	Clonality	Polyclonal
Applications	WB	Conjugation	Unconjugated
Form / Buffer	Liquid in 0.42% Potassium phosphate, 0.87% Sodium chloride, pH 7.3, 30% glycerol, and 0.01% sodium azide.		Storage at -20°C

BACKGROUND

Acts as a GTPase-activating protein (GAP) toward guanine nucleotide exchange factors like ARL2, ARL3, ARF1 and ARF6, but not for GTPases outside the Arf family. Regulates IFN-related antiviral responses.

APPLICATION

To ensure optimal assay performance, AREX recommends conducting reagent titration tailored to each testing system for optimal detection results.

WB	1:500 - 1:2000
----	----------------

*Results are sample-specific. Please refer to your local assay conditions and test parameters for reference.

PRODUCT OVERVIEW

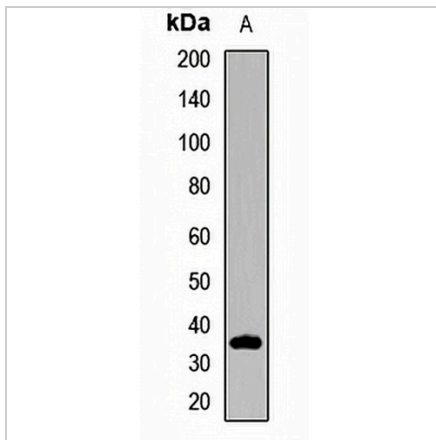
Description	Rabbit polyclonal antibody to ELMOD2
Specificity	Recognizes endogenous levels of ELMOD2 protein.
Antibody Type	Primary antibody
Immunogen	Recombinant fusion protein of human ELMOD2
Purification	The antibody was purified by immunogen affinity chromatography.
Molecular Weight	Predicted: 34 kD; Observed: 37 kD
Form/Buffer	Liquid in 0.42% Potassium phosphate, 0.87% Sodium chloride, pH 7.3, 30% glycerol, and 0.01% sodium azide.
Alternative Names	ELMO domain-containing protein 2
Gene Symbol	ELMOD2
Entrez Gene	255520(Human); 244548(Mouse)
SwissProt	Q8IZ81(Human); Q8BGF6(Mouse)

*AREX continuously optimizes our products. Webpage content may not reflect the latest updates. For inquiries, please contact info@arexbio.com or your local distributor.

*Clone Number, Reactivity, Source/Host and Clonality can be found in the product name and Key Features section above.

DATASHEET**ELMOD2 Rabbit Polyclonal Antibody**

CAT. NO. APA14709

DATA

Western blot analysis of ELMOD2 expression in mouse brain (A) whole cell lysates.
(Predicted band size: 34 kD; Observed band size: 37 kD)

STORAGE

Store at 4°C short term. For long term storage, store at -20°C, avoiding freeze/thaw cycles.

NOTE

For Research Use Only. Not for diagnostic, therapeutics, prophylactic or in vivo use.