

DATASHEET

HELIC1 Rabbit Polyclonal Antibody

CAT. NO. APA14716

KEY FEATURES

Target	HELIC1	Source / Host	Rabbit
Reactivity	Human, Mouse, Rat	Clonality	Polyclonal
Applications	WB, IF/ICC	Conjugation	Unconjugated
Form / Buffer	Liquid in 0.42% Potassium phosphate, 0.87% Sodium chloride, pH 7.3, 30% glycerol, and 0.01% sodium azide.		Storage at -20°C

BACKGROUND

ATPase involved both in DNA repair and rescue of stalled ribosomes . 3'-5' DNA helicase involved in repair of alkylated DNA: promotes DNA unwinding to generate single-stranded substrate needed for ALKBH3, enabling ALKBH3 to process alkylated N3-methylcytosine (3mC) within double-stranded regions . Also involved in activation of the ribosome quality control (RQC) pathway, a pathway that degrades nascent peptide chains during problematic translation . Drives the splitting of stalled ribosomes that are ubiquitinated in a ZNF598-dependent manner, as part of the ribosome quality control trigger (RQT) complex . Part of the ASC-1 complex that enhances NF-kappa-B, SRF and AP1 transactivation .

APPLICATION

To ensure optimal assay performance, AREX recommends conducting reagent titration tailored to each testing system for optimal detection results.

WB	1:500 - 1:2000
IF/ICC	1:50 - 1:200

*Results are sample-specific. Please refer to your local assay conditions and test parameters for reference.

PRODUCT OVERVIEW

Description	Rabbit polyclonal antibody to HELIC1
Specificity	Recognizes endogenous levels of HELIC1 protein.
Antibody Type	Primary antibody
Immunogen	Recombinant fusion protein of human HELIC1
Purification	The antibody was purified by immunogen affinity chromatography.
Molecular Weight	Predicted: 13; Observed: 155kD
Form/Buffer	Liquid in 0.42% Potassium phosphate, 0.87% Sodium chloride, pH 7.3, 30% glycerol, and 0.01% sodium azide.
Alternative Names	HELIC1; Activating signal cointegrator 1 complex subunit 3; ASC-1 complex subunit p200; ASC1p200; Helicase, ATP binding 1; Trip4 complex subunit p200
Gene Symbol	ASCC3
Entrez Gene	10973(Human); 77987(Mouse)
SwissProt	Q8N3C0(Human); E9PZJ8(Mouse); F1LPQ2(Rat)

*AREX continuously optimizes our products. Webpage content may not reflect the latest updates. For inquiries, please contact info@arexbio.com or your local distributor.

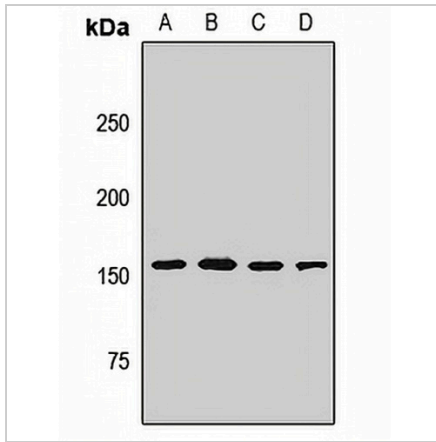
*Clone Number, Reactivity, Source/Host and Clonality can be found in the product name and Key Features section above.

DATASHEET

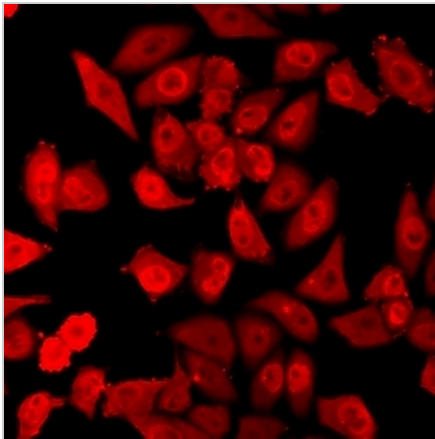
HELIC1 Rabbit Polyclonal Antibody

CAT. NO. APA14716

DATA



Western blot analysis of HELIC1 expression in Jurkat (A), HeLa (B), mouse liver (C), mouse brain (D) whole cell lysates. (Predicted band size: 13; 83; 251 kD; Observed band size: 155kD)



Immunofluorescent analysis of HELIC1 staining in A549 cells. Formalin-fixed cells were permeabilized with 0.1% Triton X-100 in TBS for 5-10 minutes and blocked with 3% BSA-PBS for 30 minutes at room temperature. Cells were probed with the primary antibody in 3% BSA-PBS and incubated overnight at 4 °C in a humidified chamber. Cells were washed with PBST and incubated with a DyLight 594-conjugated secondary antibody (red) in PBS at room temperature in the dark.

STORAGE

Store at 4°C short term. For long term storage, store at -20°C, avoiding freeze/thaw cycles.

NOTE

For Research Use Only. Not for diagnostic, therapeutics, prophylactic or in vivo use.