

DATASHEET

LEPREL1 Rabbit Polyclonal Antibody

CAT. NO. APA14721

KEY FEATURES

Target	LEPREL1	Source / Host	Rabbit
Reactivity	Human, Mouse, Rat	Clonality	Polyclonal
Applications	WB	Conjugation	Unconjugated
Form / Buffer	Liquid in 0.42% Potassium phosphate, 0.87% Sodium chloride, pH 7.3, 30% glycerol, and 0.01% sodium azide.		Storage at -20°C

BACKGROUND

Prolyl 3-hydroxylase that catalyzes the post-translational formation of 3-hydroxyproline on collagens . Contributes to proline 3-hydroxylation of collagen COL4A1 and COL1A1 in tendons, the eye sclera and in the eye lens capsule . Has high activity with the type IV collagen COL4A1, and lower activity with COL1A1 . Catalyzes hydroxylation of the first Pro in Gly-Pro-Hyp sequences where Hyp is 4-hydroxyproline . Has no activity on substrates that lack 4-hydroxyproline in the third position .

APPLICATION

To ensure optimal assay performance, AREX recommends conducting reagent titration tailored to each testing system for optimal detection results.

WB	1:500 - 1:2000
----	----------------

*Results are sample-specific. Please refer to your local assay conditions and test parameters for reference.

PRODUCT OVERVIEW

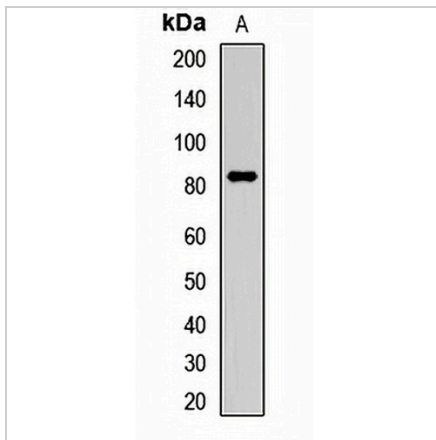
Description	Rabbit polyclonal antibody to LEPREL1
Specificity	Recognizes endogenous levels of LEPREL1 protein.
Antibody Type	Primary antibody
Immunogen	Recombinant fusion protein of human LEPREL1
Purification	The antibody was purified by immunogen affinity chromatography.
Molecular Weight	Predicted: 60; Observed: 85 kD
Form/Buffer	Liquid in 0.42% Potassium phosphate, 0.87% Sodium chloride, pH 7.3, 30% glycerol, and 0.01% sodium azide.
Alternative Names	MLAT4; P3H2; Prolyl 3-hydroxylase 2; Leprecan-like protein 1; Myxoid liposarcoma-associated protein 4
Gene Symbol	LEPREL1
Entrez Gene	55214(Human); 210530(Mouse); 288016(Rat)
SwissProt	Q8IVL5(Human); Q8CG71(Mouse); Q4KLM6(Rat)

*AREX continuously optimizes our products. Webpage content may not reflect the latest updates. For inquiries, please contact info@arexbio.com or your local distributor.

*Clone Number, Reactivity, Source/Host and Clonality can be found in the product name and Key Features section above.

DATASHEET**LEPREL1 Rabbit Polyclonal Antibody**

CAT. NO. APA14721

DATA

Western blot analysis of LEPREL1 expression in HeLa (A) whole cell lysates. (Predicted band size: 60; 80 kD; Observed band size: 85 kD)

STORAGE

Store at 4°C short term. For long term storage, store at -20°C, avoiding freeze/thaw cycles.

NOTE

For Research Use Only. Not for diagnostic, therapeutics, prophylactic or in vivo use.