

DATASHEET

CPS1 Rabbit Polyclonal Antibody

CAT. NO. APA14722

KEY FEATURES

Target	CPS1	Source / Host	Rabbit
Reactivity	Human, Mouse, Rat	Clonality	Polyclonal
Applications	WB, IF/ICC	Conjugation	Unconjugated
Form / Buffer	Liquid in 0.42% Potassium phosphate, 0.87% Sodium chloride, pH 7.3, 30% glycerol, and 0.01% sodium azide.		Storage at -20°C

BACKGROUND

Involved in the urea cycle of ureotelic animals where the enzyme plays an important role in removing excess ammonia from the cell.

APPLICATION

To ensure optimal assay performance, AREX recommends conducting reagent titration tailored to each testing system for optimal detection results.

WB	1:500 - 1:2000
IF/ICC	1:50 - 1:200

*Results are sample-specific. Please refer to your local assay conditions and test parameters for reference.

PRODUCT OVERVIEW

Description	Rabbit polyclonal antibody to CPS1
Specificity	Recognizes endogenous levels of CPS1 protein.
Antibody Type	Primary antibody
Immunogen	Recombinant fusion protein of human CPS1
Purification	The antibody was purified by immunogen affinity chromatography.
Molecular Weight	Predicted: 116; Observed: 165 kD
Form/Buffer	Liquid in 0.42% Potassium phosphate, 0.87% Sodium chloride, pH 7.3, 30% glycerol, and 0.01% sodium azide.
Alternative Names	Carbamoyl-phosphate synthase [ammonia] mitochondrial; Carbamoyl-phosphate synthetase I; CPSase I
Gene Symbol	CPS1
Entrez Gene	1373(Human); 227231(Mouse); 497840(Rat)
SwissProt	P31327(Human); Q8C196(Mouse); P07756(Rat)

*AREX continuously optimizes our products. Webpage content may not reflect the latest updates. For inquiries, please contact info@arexbio.com or your local distributor.

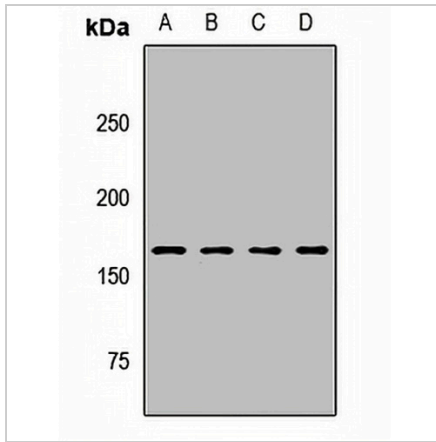
*Clone Number, Reactivity, Source/Host and Clonality can be found in the product name and Key Features section above.

DATASHEET

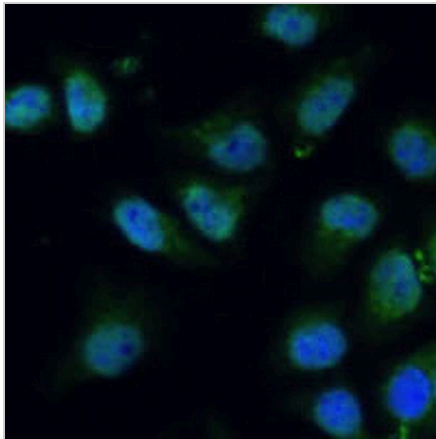
CPS1 Rabbit Polyclonal Antibody

CAT. NO. APA14722

DATA



Western blot analysis of CPS1 expression in HepG2 (A), HeLa (B), mouse liver (C), rat liver (D) whole cell lysates. (Predicted band size: 116; 164; 165 kD; Observed band size: 165 kD)



Immunofluorescent analysis of CPS1 staining in HeLa cells. Formalin-fixed cells were permeabilized with 0.1% Triton X-100 in TBS for 5-10 minutes and blocked with 3% BSA-PBS for 30 minutes at room temperature. Cells were probed with the primary antibody in 3% BSA-PBS and incubated overnight at 4 °C in a humidified chamber. Cells were washed with PBST and incubated with a AREX® Fluor 488 -conjugated secondary antibody (green) in PBS at room temperature in the dark. DAPI was used to stain the cell nuclei (blue).

STORAGE

Store at 4°C short term. For long term storage, store at -20°C, avoiding freeze/thaw cycles.

NOTE

For Research Use Only. Not for diagnostic, therapeutics, prophylactic or in vivo use.