

DATASHEET

TRPC6 Rabbit Polyclonal Antibody

CAT. NO. APA14728

KEY FEATURES

Target	TRPC6	Source / Host	Rabbit
Reactivity	Human, Mouse, Rat	Clonality	Polyclonal
Applications	WB	Conjugation	Unconjugated
Form / Buffer	Liquid in 0.42% Potassium phosphate, 0.87% Sodium chloride, pH 7.3, 30% glycerol, and 0.01% sodium azide.		Storage at-20°C

BACKGROUND

Forms a receptor-activated non-selective calcium permeant cation channel . Probably is operated by a phosphatidylinositol second messenger system activated by receptor tyrosine kinases or G-protein coupled receptors. Activated by diacylglycerol (DAG) in a membrane-delimited fashion, independently of protein kinase C . Does not seem to be activated by intracellular calcium store depletion.

APPLICATION

To ensure optimal assay performance, AREX recommends conducting reagent titration tailored to each testing system for optimal detection results.

WB	1:500 - 1:2000
----	----------------

*Results are sample-specific. Please refer to your local assay conditions and test parameters for reference.

PRODUCT OVERVIEW

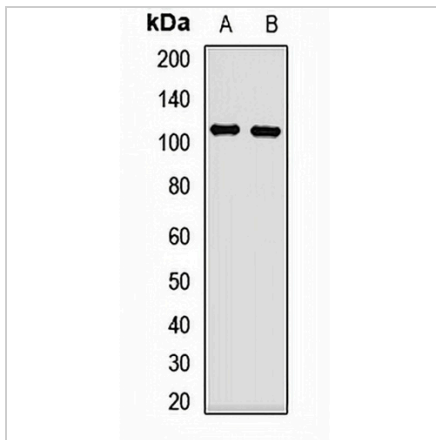
Description	Rabbit polyclonal antibody to TRPC6
Specificity	Recognizes endogenous levels of TRPC6 protein.
Antibody Type	Primary antibody
Immunogen	KLH-conjugated synthetic peptide of human TRPC6
Purification	The antibody was purified by immunogen affinity chromatography.
Molecular Weight	Predicted: 93; Observed: 106 kD
Form/Buffer	Liquid in 0.42% Potassium phosphate, 0.87% Sodium chloride, pH 7.3, 30% glycerol, and 0.01% sodium azide.
Alternative Names	TRP6; Short transient receptor potential channel 6; TrpC6; Transient receptor protein 6; TRP-6
Gene Symbol	TRPC6
Entrez Gene	7225(Human); 22068(Mouse)
SwissProt	Q9Y210(Human); Q61143(Mouse)

*AREX continuously optimizes our products. Webpage content may not reflect the latest updates. For inquiries, please contact info@arexbio.com or your local distributor.

*Clone Number, Reactivity, Source/Host and Clonality can be found in the product name and Key Features section above.

DATASHEET**TRPC6 Rabbit Polyclonal Antibody**

CAT. NO. APA14728

DATA

Western blot analysis of TRPC6 expression in mouse lung (A), rat brain (B) whole cell lysates. (Predicted band size: 93; 100; 106 kD; Observed band size: 106 kD)

STORAGE

Store at 4°C short term. For long term storage, store at -20°C, avoiding freeze/thaw cycles.

NOTE

For Research Use Only. Not for diagnostic, therapeutics, prophylactic or in vivo use.