

DATASHEET

KDM6A Rabbit Polyclonal Antibody

CAT. NO. APA14729

KEY FEATURES

Target	KDM6A	Source / Host	Rabbit
Reactivity	Human, Mouse, Rat	Clonality	Polyclonal
Applications	WB, IHC	Conjugation	Unconjugated
Form / Buffer	Liquid in 0.42% Potassium phosphate, 0.87% Sodium chloride, pH 7.3, 30% glycerol, and 0.01% sodium azide.		Storage at -20°C

BACKGROUND

Histone demethylase that specifically demethylates 'Lys-27' of histone H3, thereby playing a central role in histone code . Demethylates trimethylated and dimethylated but not monomethylated H3 'Lys-27' . Plays a central role in regulation of posterior development, by regulating HOX gene expression . Demethylation of 'Lys-27' of histone H3 is concomitant with methylation of 'Lys-4' of histone H3, and regulates the recruitment of the PRC1 complex and monoubiquitination of histone H2A . Plays a demethylase-independent role in chromatin remodeling to regulate T-box family member-dependent gene expression .

APPLICATION

To ensure optimal assay performance, AREX recommends conducting reagent titration tailored to each testing system for optimal detection results.

WB	1:500 - 1:2000
IHC	1:50 - 1:200

*Results are sample-specific. Please refer to your local assay conditions and test parameters for reference.

PRODUCT OVERVIEW

Description	Rabbit polyclonal antibody to KDM6A
Specificity	Recognizes endogenous levels of KDM6A protein.
Antibody Type	Primary antibody
Immunogen	Recombinant fusion protein of human KDM6A
Purification	The antibody was purified by immunogen affinity chromatography.
Molecular Weight	Predicted: 154; Observed: 154 kD
Form/Buffer	Liquid in 0.42% Potassium phosphate, 0.87% Sodium chloride, pH 7.3, 30% glycerol, and 0.01% sodium azide.
Alternative Names	UTX; Lysine-specific demethylase 6A; Histone demethylase UTX; Ubiquitously-transcribed TPR protein on the X chromosome; Ubiquitously-transcribed X chromosome tetratricopeptide repeat protein
Gene Symbol	KDM6A
Entrez Gene	7403(Human); 22289(Mouse)
SwissProt	O15550(Human); O70546(Mouse)

*AREX continuously optimizes our products. Webpage content may not reflect the latest updates. For inquiries, please contact info@arexbio.com or your local distributor.

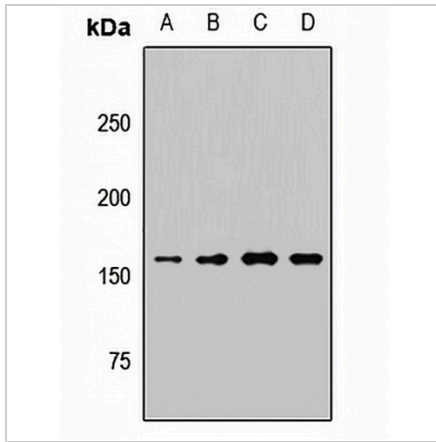
*Clone Number, Reactivity, Source/Host and Clonality can be found in the product name and Key Features section above.

DATASHEET

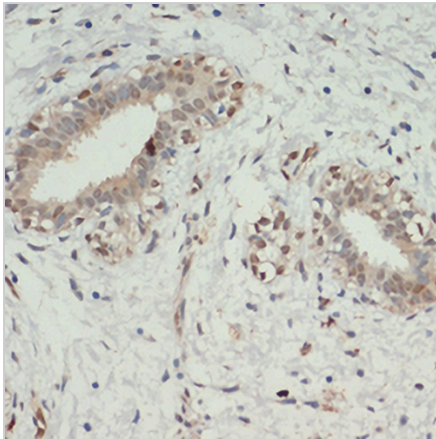
KDM6A Rabbit Polyclonal Antibody

CAT. NO. APA14729

DATA



Western blot analysis of KDM6A expression in SHSY5Y (A), NIH3T3 (B), mouse spleen (C), rat liver (D) whole cell lysates. (Predicted band size: 154; 157 kD; Observed band size: 154 kD)



Immunohistochemical analysis of KDM6A staining in human breast cancer formalin fixed paraffin embedded tissue section. The section was pre-treated using heat mediated antigen retrieval with sodium citrate buffer (pH 6.0). The section was then incubated with the antibody at room temperature and detected using an HRP conjugated compact polymer system. DAB was used as the chromogen. The section was then counterstained with haematoxylin and mounted with DPX.

STORAGE

Store at 4°C short term. For long term storage, store at -20°C, avoiding freeze/thaw cycles.

NOTE

For Research Use Only. Not for diagnostic, therapeutics, prophylactic or in vivo use.