

DATASHEET

Ninein Rabbit Polyclonal Antibody

CAT. NO. APA14733

KEY FEATURES

Target	Ninein	Source / Host	Rabbit
Reactivity	Human, Mouse, Rat	Clonality	Polyclonal
Applications	WB, IHC	Conjugation	Unconjugated
Form / Buffer	Liquid in 0.42% Potassium phosphate, 0.87% Sodium chloride, pH 7.3, 30% glycerol, and 0.01% sodium azide.		Storage at-20°C

BACKGROUND

Centrosomal protein required in the positioning and anchorage of the microtubule minus-end in epithelial cells . May also act as a centrosome maturation factor . May play a role in microtubule nucleation, by recruiting the gamma-tubulin ring complex to the centrosome . Overexpression does not perturb nucleation or elongation of microtubules but suppresses release of microtubules . Required for centriole organization and microtubule anchoring at the mother centriole .

APPLICATION

To ensure optimal assay performance, AREX recommends conducting reagent titration tailored to each testing system for optimal detection results.

WB	1:500 - 1:1000
IHC	1:50 - 1:200

*Results are sample-specific. Please refer to your local assay conditions and test parameters for reference.

PRODUCT OVERVIEW

Description	Rabbit polyclonal antibody to Ninein
Specificity	Recognizes endogenous levels of Ninein protein.
Antibody Type	Primary antibody
Immunogen	Recombinant fusion protein of human Ninein
Purification	The antibody was purified by immunogen affinity chromatography.
Molecular Weight	Predicted: 147; Observed: 190 kD
Form/Buffer	Liquid in 0.42% Potassium phosphate, 0.87% Sodium chloride, pH 7.3, 30% glycerol, and 0.01% sodium azide.
Alternative Names	KIAA1565; Ninein; hNinein; Glycogen synthase kinase 3 beta-interacting protein; GSK3B-interacting protein
Gene Symbol	NIN
Entrez Gene	51199(Human); 18080(Mouse)
SwissProt	Q8N4C6(Human); Q61043(Mouse)

*AREX continuously optimizes our products. Webpage content may not reflect the latest updates. For inquiries, please contact info@arexbio.com or your local distributor.

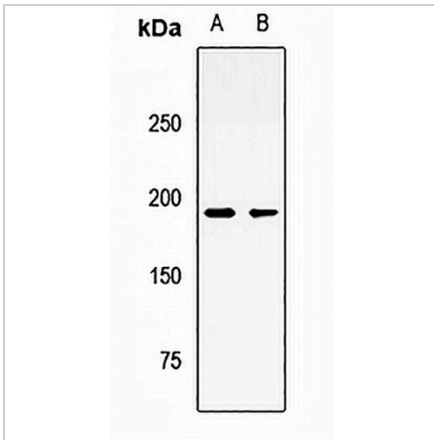
*Clone Number, Reactivity, Source/Host and Clonality can be found in the product name and Key Features section above.

DATASHEET

Ninein Rabbit Polyclonal Antibody

CAT. NO. APA14733

DATA



Western blot analysis of Ninein expression in mouse skin (A), rat skin (B) whole cell lysates. (Predicted band size: 147; 160; 236-248 kD; Observed band size: 190 kD)

Data 2

Immunohistochemical analysis of Ninein staining in human lung cancer formalin fixed paraffin embedded tissue section. The section was pre-treated using heat mediated antigen retrieval with sodium citrate buffer (pH 6.0). The section was then incubated with the antibody at room temperature and detected using an HRP conjugated compact polymer system. DAB was used as the chromogen. The section was then counterstained with haematoxylin and mounted with DPX.

STORAGE

Store at 4°C short term. For long term storage, store at -20°C, avoiding freeze/thaw cycles.

NOTE

For Research Use Only. Not for diagnostic, therapeutics, prophylactic or in vivo use.