

DATASHEET

RNF166 Rabbit Polyclonal Antibody

CAT. NO. APA14735

KEY FEATURES

Target	RNF166	Source / Host	Rabbit
Reactivity	Human, Mouse	Clonality	Polyclonal
Applications	WB, IHC	Conjugation	Unconjugated
Form / Buffer	Liquid in 0.42% Potassium phosphate, 0.87% Sodium chloride, pH 7.3, 30% glycerol, and 0.01% sodium azide.		Storage at -20°C

BACKGROUND

E3 ubiquitin-protein ligase that promotes the ubiquitination of different substrates . In turn, participates in different biological processes including interferon production or autophagy . Plays a role in the activation of RNA virus-induced interferon-beta production by promoting the ubiquitination of TRAF3 and TRAF6 . Also plays a role in the early recruitment of autophagy adapters to bacteria . Mediates 'Lys-29' and 'Lys-33'-linked ubiquitination of SQSTM1 leading to xenophagic targeting of bacteria and inhibition of their replication .

APPLICATION

To ensure optimal assay performance, AREX recommends conducting reagent titration tailored to each testing system for optimal detection results.

WB	1:500 - 1:2000
IHC	1:50 - 1:200

*Results are sample-specific. Please refer to your local assay conditions and test parameters for reference.

PRODUCT OVERVIEW

Description	Rabbit polyclonal antibody to RNF166
Specificity	Recognizes endogenous levels of RNF166 protein.
Antibody Type	Primary antibody
Immunogen	KLH-conjugated synthetic peptide of human RNF166
Purification	The antibody was purified by immunogen affinity chromatography.
Molecular Weight	Predicted: 14; Observed: 26 kD
Form/Buffer	Liquid in 0.42% Potassium phosphate, 0.87% Sodium chloride, pH 7.3, 30% glycerol, and 0.01% sodium azide.
Alternative Names	RING finger protein 166
Gene Symbol	RNF166
Entrez Gene	115992(Human); 68718(Mouse)
SwissProt	Q96A37(Human); Q3U9F6(Mouse)

*AREX continuously optimizes our products. Webpage content may not reflect the latest updates. For inquiries, please contact info@arexbio.com or your local distributor.

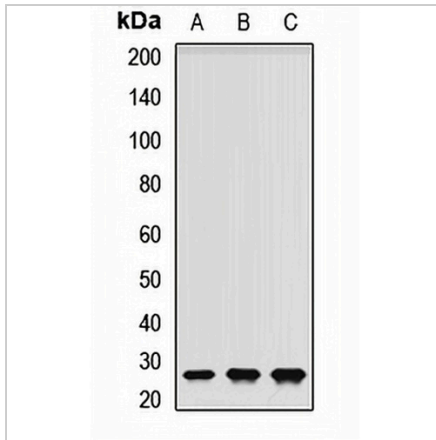
*Clone Number, Reactivity, Source/Host and Clonality can be found in the product name and Key Features section above.

DATASHEET

RNF166 Rabbit Polyclonal Antibody

CAT. NO. APA14735

DATA



Western blot analysis of RNF166 expression in SHSY5Y (A), K562 (B), MCF7 (C) whole cell lysates. (Predicted band size: 14; 17; 26 kD; Observed band size: 26 kD)

Data 2

Immunohistochemical analysis of RNF166 staining in human brain formalin fixed paraffin embedded tissue section. The section was pre-treated using heat mediated antigen retrieval with sodium citrate buffer (pH 6.0). The section was then incubated with the antibody at room temperature and detected using an HRP conjugated compact polymer system. DAB was used as the chromogen. The section was then counterstained with haematoxylin and mounted with DPX.

STORAGE

Store at 4°C short term. For long term storage, store at -20°C, avoiding freeze/thaw cycles.

NOTE

For Research Use Only. Not for diagnostic, therapeutics, prophylactic or in vivo use.