

## DATASHEET

# LLGL2 Rabbit Polyclonal Antibody

CAT. NO. APA14736

### KEY FEATURES

|               |   |               |                     |
|---------------|---|---------------|---------------------|
| Target        | LLGL2   | Source / Host | Rabbit              |
| Reactivity    | Human, Mouse, Rat   | Clonality     | Polyclonal          |
| Applications  | WB, IF/ICC  | Conjugation   | Unconjugated        |
| Form / Buffer | Liquid in 0.42% Potassium phosphate, 0.87% Sodium chloride, pH 7.3, 30% glycerol, and 0.01% sodium azide. |               | Storage<br>at -20°C |

### BACKGROUND

Part of a complex with GPSM2/LGN, PRKCI/aPKC and PARD6B/Par-6, which may ensure the correct organization and orientation of bipolar spindles for normal cell division. This complex plays roles in the initial phase of the establishment of epithelial cell polarity.

### APPLICATION

To ensure optimal assay performance, AREX recommends conducting reagent titration tailored to each testing system for optimal detection results.

|        |                |
|--------|----------------|
| WB     | 1:500 - 1:1000 |
| IF/ICC | 1:50 - 1:200   |

\*Results are sample-specific. Please refer to your local assay conditions and test parameters for reference.

### PRODUCT OVERVIEW

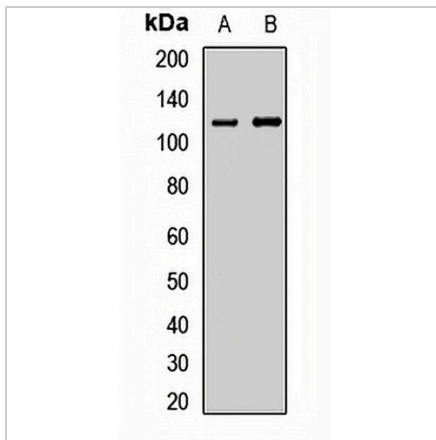
|                   |   |
|-------------------|---|
| Description       | Rabbit polyclonal antibody to LLGL2   |
| Specificity       | Recognizes endogenous levels of LLGL2 protein.  |
| Antibody Type     | Primary antibody  |
| Immunogen         | Recombinant fusion protein of human LLGL2   |
| Purification      | The antibody was purified by immunogen affinity chromatography.   |
| Molecular Weight  | Predicted: 114 kD; Observed: 113 kD   |
| Form/Buffer       | Liquid in 0.42% Potassium phosphate, 0.87% Sodium chloride, pH 7.3, 30% glycerol, and 0.01% sodium azide. |
| Alternative Names | Lethal(2) giant larvae protein homolog 2; HGL   |
| Gene Symbol       | LLGL2   |
| Entrez Gene       | 3993(Human); 217325(Mouse)  |
| SwissProt         | Q6P1M3(Human); Q3TJ91(Mouse)  |

\*AREX continuously optimizes our products. Webpage content may not reflect the latest updates. For inquiries, please contact [info@arexbio.com](mailto:info@arexbio.com) or your local distributor.

\*Clone Number, Reactivity, Source/Host and Clonality can be found in the product name and Key Features section above.

**DATASHEET****LLGL2 Rabbit Polyclonal Antibody**

CAT. NO. APA14736

**DATA**

Western blot analysis of LLGL2 expression in HepG2 (A), mouse lung (B) whole cell lysates. (Predicted band size: 114 kD; Observed band size: 113 kD)

**STORAGE**

Store at 4°C short term. For long term storage, store at -20°C, avoiding freeze/thaw cycles.

**NOTE**

For Research Use Only. Not for diagnostic, therapeutics, prophylactic or in vivo use.