

DATASHEET

Synip Rabbit Polyclonal Antibody

CAT. NO. APA14737

KEY FEATURES

Target	Synip	Source / Host	Rabbit
Reactivity	Human, Mouse	Clonality	Polyclonal
Applications	WB, IHC	Conjugation	Unconjugated
Form / Buffer	Liquid in 0.42% Potassium phosphate, 0.87% Sodium chloride, pH 7.3, 30% glycerol, and 0.01% sodium azide.		Storage at -20°C

BACKGROUND

Plays a role in the translocation of transport vesicles from the cytoplasm to the plasma membrane. Inhibits the translocation of SLC2A4 from intracellular vesicles to the plasma membrane by STX4A binding and preventing the interaction between STX4A and VAMP2. Stimulation with insulin disrupts the interaction with STX4A, leading to increased levels of SLC2A4 at the plasma membrane. May also play a role in the regulation of insulin release by pancreatic beta cells after stimulation by glucose .

APPLICATION

To ensure optimal assay performance, AREX recommends conducting reagent titration tailored to each testing system for optimal detection results.

WB	1:500 - 1:2000
IHC	1:50 - 1:200

*Results are sample-specific. Please refer to your local assay conditions and test parameters for reference.

PRODUCT OVERVIEW

Description	Rabbit polyclonal antibody to Synip
Specificity	Recognizes endogenous levels of Synip protein.
Antibody Type	Primary antibody
Immunogen	Recombinant fusion protein of human Synip
Purification	The antibody was purified by immunogen affinity chromatography.
Molecular Weight	Predicted: 26; Observed: 70 kD
Form/Buffer	Liquid in 0.42% Potassium phosphate, 0.87% Sodium chloride, pH 7.3, 30% glycerol, and 0.01% sodium azide.
Alternative Names	Syntaxin-binding protein 4; Syntaxin 4-interacting protein; STX4-interacting protein; Synip
Gene Symbol	STXBP4
Entrez Gene	252983(Human); 20913(Mouse)
SwissProt	Q6ZMJ1(Human); Q9WV89(Mouse)

*AREX continuously optimizes our products. Webpage content may not reflect the latest updates. For inquiries, please contact info@arexbio.com or your local distributor.

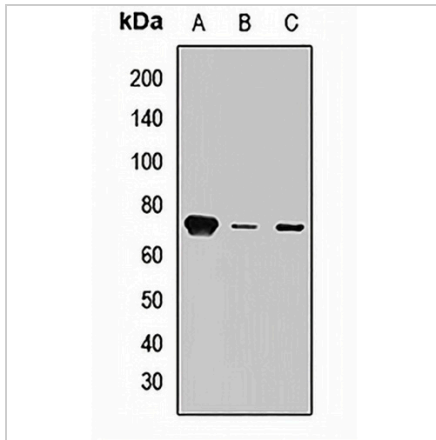
*Clone Number, Reactivity, Source/Host and Clonality can be found in the product name and Key Features section above.

DATASHEET

Synip Rabbit Polyclonal Antibody

CAT. NO. APA14737

DATA



Western blot analysis of Synip expression in A549 (A), HepG2 (B), mouse pancreas (C) whole cell lysates. (Predicted band size: 26; 61 kD; Observed band size: 70 kD)

Data 2

Immunohistochemical analysis of Synip staining in human breast cancer formalin fixed paraffin embedded tissue section. The section was pre-treated using heat mediated antigen retrieval with sodium citrate buffer (pH 6.0). The section was then incubated with the antibody at room temperature and detected using an HRP conjugated compact polymer system. DAB was used as the chromogen. The section was then counterstained with haematoxylin and mounted with DPX.

STORAGE

Store at 4°C short term. For long term storage, store at -20°C, avoiding freeze/thaw cycles.

NOTE

For Research Use Only. Not for diagnostic, therapeutics, prophylactic or in vivo use.