

DATASHEET

PALB2 Rabbit Polyclonal Antibody

CAT. NO. APA14741

KEY FEATURES

Target	PALB2	Source / Host	Rabbit
Reactivity	Human, Mouse	Clonality	Polyclonal
Applications	WB	Conjugation	Unconjugated
Form / Buffer	Liquid in 0.42% Potassium phosphate, 0.87% Sodium chloride, pH 7.3, 30% glycerol, and 0.01% sodium azide.		Storage at -20°C

BACKGROUND

Plays a critical role in homologous recombination repair (HRR) through its ability to recruit BRCA2 and RAD51 to DNA breaks through its ability to recruit BRCA2 and RAD51 to DNA breaks . Strongly stimulates the DNA strand-invasion activity of RAD51, stabilizes the nucleoprotein filament against a disruptive BRC3-BRC4 polypeptide and helps RAD51 to overcome the suppressive effect of replication protein A (RPA) . Functionally cooperates with RAD51AP1 in promoting of D-loop formation by RAD51 . Serves as the molecular scaffold in the formation of the BRCA1-PALB2-BRCA2 complex which is essential for homologous recombination . Via its WD repeats is proposed to scaffold a HR complex containing RAD51C and BRCA2 which is thought to play a role in HR-mediated DNA repair .

APPLICATION

To ensure optimal assay performance, AREX recommends conducting reagent titration tailored to each testing system for optimal detection results.

WB	1:500 - 1:2000
----	----------------

*Results are sample-specific. Please refer to your local assay conditions and test parameters for reference.

PRODUCT OVERVIEW

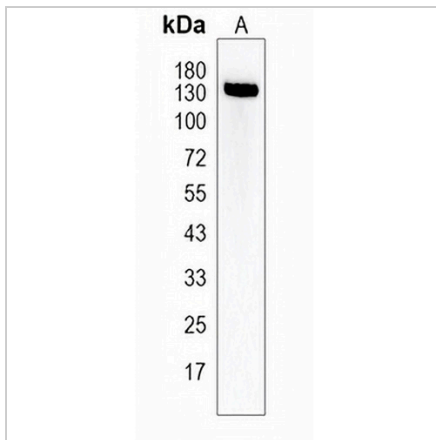
Description	Rabbit polyclonal antibody to PALB2
Specificity	Recognizes endogenous levels of PALB2 protein.
Antibody Type	Primary antibody
Immunogen	Recombinant fusion protein of human PALB2
Purification	The antibody was purified by immunogen affinity chromatography.
Molecular Weight	Predicted: 131 kD; Observed: 150 kD
Form/Buffer	Liquid in 0.42% Potassium phosphate, 0.87% Sodium chloride, pH 7.3, 30% glycerol, and 0.01% sodium azide.
Alternative Names	FANCN; Partner and localizer of BRCA2
Gene Symbol	PALB2
Entrez Gene	79728(Human); 233826(Mouse)
SwissProt	Q86YC2(Human); Q3U0P1(Mouse)

*AREX continuously optimizes our products. Webpage content may not reflect the latest updates. For inquiries, please contact info@arexbio.com or your local distributor.

*Clone Number, Reactivity, Source/Host and Clonality can be found in the product name and Key Features section above.

DATASHEET**PALB2 Rabbit Polyclonal Antibody**

CAT. NO. APA14741

DATA

Western blot analysis of PALB2 expression in MCF7 (A) whole cell lysates. (Predicted band size: 131 kD; Observed band size: 150 kD)

STORAGE

Store at 4°C short term. For long term storage, store at -20°C, avoiding freeze/thaw cycles.

NOTE

For Research Use Only. Not for diagnostic, therapeutics, prophylactic or in vivo use.