

**DATASHEET**

**ALAD Rabbit Polyclonal Antibody**

CAT. NO. APA14747

**KEY FEATURES**

Target	ALAD	Source / Host	Rabbit
Reactivity	Human	Clonality	Polyclonal
Applications	WB, IF/ICC	Conjugation	Unconjugated
Form / Buffer	Liquid in 0.42% Potassium phosphate, 0.87% Sodium chloride, pH 7.3, 30% glycerol, and 0.01% sodium azide.		Storage at -20°C

**BACKGROUND**

Catalyzes an early step in the biosynthesis of tetrapyrroles. Binds two molecules of 5-aminolevulinate per subunit, each at a distinct site, and catalyzes their condensation to form porphobilinogen.

**APPLICATION**

To ensure optimal assay performance, AREX recommends conducting reagent titration tailored to each testing system for optimal detection results.

WB	1:500 - 1:1000
IF/ICC	1:50 - 1:200

\*Results are sample-specific. Please refer to your local assay conditions and test parameters for reference.

**PRODUCT OVERVIEW**

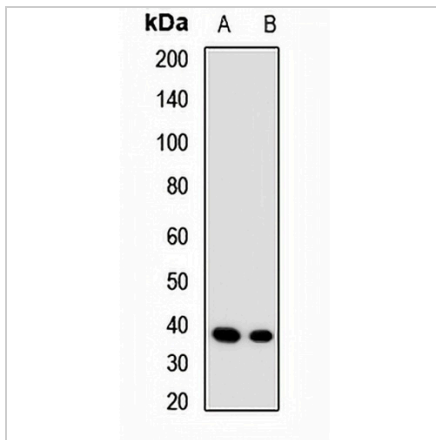
Description	Rabbit polyclonal antibody to ALAD
Specificity	Recognizes endogenous levels of ALAD protein.
Antibody Type	Primary antibody
Immunogen	Recombinant fusion protein of human ALAD
Purification	The antibody was purified by immunogen affinity chromatography.
Molecular Weight	Predicted: 36; Observed: 35 kD
Form/Buffer	Liquid in 0.42% Potassium phosphate, 0.87% Sodium chloride, pH 7.3, 30% glycerol, and 0.01% sodium azide.
Alternative Names	Delta-aminolevulinic acid dehydratase; ALADH; Porphobilinogen synthase
Gene Symbol	ALAD
Entrez Gene	210(Human)
SwissProt	P13716(Human)

\*AREX continuously optimizes our products. Webpage content may not reflect the latest updates. For inquiries, please contact [info@arexbio.com](mailto:info@arexbio.com) or your local distributor.

\*Clone Number, Reactivity, Source/Host and Clonality can be found in the product name and Key Features section above.

**DATASHEET****ALAD Rabbit Polyclonal Antibody**

CAT. NO. APA14747

**DATA**

Western blot analysis of ALAD expression in MCF7 (A), HL60 (B) whole cell lysates.  
(Predicted band size: 36; 39 kD; Observed band size: 35 kD)

**STORAGE**

Store at 4°C short term. For long term storage, store at -20°C, avoiding freeze/thaw cycles.

**NOTE**

For Research Use Only. Not for diagnostic, therapeutics, prophylactic or in vivo use.