

DATASHEET

Vasopressin V1a Receptor Rabbit Polyclonal Antibody

CAT. NO. APA14748

KEY FEATURES

Target	Vasopressin V1a Receptor	Source / Host	Rabbit
Reactivity	Human, Mouse, Rat	Clonality	Polyclonal
Applications	WB, IF/ICC	Conjugation	Unconjugated
Form / Buffer	Liquid in 0.42% Potassium phosphate, 0.87% Sodium chloride, pH 7.3, 30% glycerol, and 0.01% sodium azide.	Storage	at-20°C

BACKGROUND

Receptor for arginine vasopressin. The activity of this receptor is mediated by G proteins which activate a phosphatidylinositol-calcium second messenger system. Has been involved in social behaviors, including affiliation and attachment.

APPLICATION

To ensure optimal assay performance, AREX recommends conducting reagent titration tailored to each testing system for optimal detection results.

WB	1:500 - 1:2000
IF/ICC	1:50 - 1:200

*Results are sample-specific. Please refer to your local assay conditions and test parameters for reference.

PRODUCT OVERVIEW

Description	Rabbit polyclonal antibody to Vasopressin V1a Receptor
Specificity	Recognizes endogenous levels of Vasopressin V1a Receptor protein.
Antibody Type	Primary antibody
Immunogen	Recombinant fusion protein of human Vasopressin V1a Receptor
Purification	The antibody was purified by immunogen affinity chromatography.
Molecular Weight	Predicted: 46 kD; Observed: 60 kD
Form/Buffer	Liquid in 0.42% Potassium phosphate, 0.87% Sodium chloride, pH 7.3, 30% glycerol, and 0.01% sodium azide.
Alternative Names	AVPR1; Vasopressin V1a receptor; V1aR; AVPR V1a; Antidiuretic hormone receptor 1a; Vascular/hepatic-type arginine vasopressin receptor
Gene Symbol	AVPR1A
Entrez Gene	552(Human); 54140(Mouse); 25107(Rat)
SwissProt	P37288(Human); Q62463(Mouse); P30560(Rat)

*AREX continuously optimizes our products. Webpage content may not reflect the latest updates. For inquiries, please contact info@arexbio.com or your local distributor.

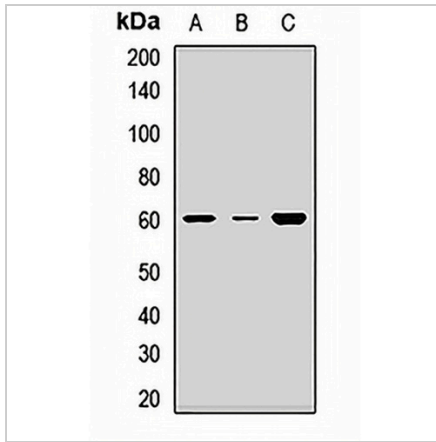
*Clone Number, Reactivity, Source/Host and Clonality can be found in the product name and Key Features section above.

DATASHEET

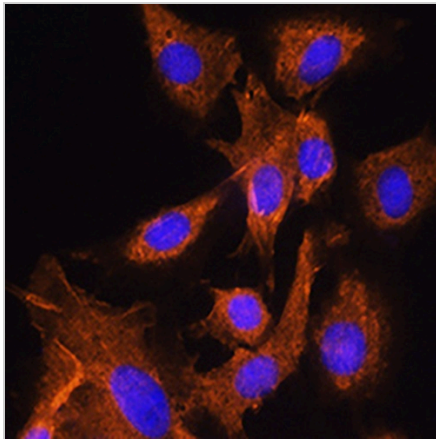
Vasopressin V1a Receptor Rabbit Polyclonal Antibody

CAT. NO. APA14748

DATA



Western blot analysis of Vasopressin V1a Receptor expression in A549 (A), mouse liver (B), rat liver (C) whole cell lysates. (Predicted band size: 46 kD; Observed band size: 60 kD)



Immunofluorescent analysis of Vasopressin V1a Receptor staining in C6 cells. Formalin-fixed cells were permeabilized with 0.1% Triton X-100 in TBS for 5-10 minutes and blocked with 3% BSA-PBS for 30 minutes at room temperature. Cells were probed with the primary antibody in 3% BSA-PBS and incubated overnight at 4 °C in a humidified chamber. Cells were washed with PBST and incubated with a AREX® Fluor 594-conjugated secondary antibody (red) in PBS at room temperature in the dark. DAPI was used to stain the cell nuclei (blue).

STORAGE

Store at 4°C short term. For long term storage, store at -20°C, avoiding freeze/thaw cycles.

NOTE

For Research Use Only. Not for diagnostic, therapeutics, prophylactic or in vivo use.