

**DATASHEET**

**Clathrin Light Chain B Rabbit Polyclonal Antibody**

CAT. NO. APA14749

**KEY FEATURES**

|               |   |               |                     |
|---------------|---|---------------|---------------------|
| Target        | Clathrin Light Chain B  | Source / Host | Rabbit              |
| Reactivity    | Human, Mouse, Rat   | Clonality     | Polyclonal          |
| Applications  | WB, IF/ICC  | Conjugation   | Unconjugated        |
| Form / Buffer | Liquid in 0.42% Potassium phosphate, 0.87% Sodium chloride, pH 7.3, 30% glycerol, and 0.01% sodium azide. |               | Storage<br>at -20°C |

**BACKGROUND**

Clathrin is the major protein of the polyhedral coat of coated pits and vesicles.

**APPLICATION**

To ensure optimal assay performance, AREX recommends conducting reagent titration tailored to each testing system for optimal detection results.

|        |                |
|--------|----------------|
| WB     | 1:500 - 1:2000 |
| IF/ICC | 1:50 - 1:200   |

\*Results are sample-specific. Please refer to your local assay conditions and test parameters for reference.

**PRODUCT OVERVIEW**

|                   |   |
|-------------------|---|
| Description       | Rabbit polyclonal antibody to Clathrin Light Chain B  |
| Specificity       | Recognizes endogenous levels of Clathrin Light Chain B protein.   |
| Antibody Type     | Primary antibody  |
| Immunogen         | Recombinant fusion protein of human Clathrin Light Chain B  |
| Purification      | The antibody was purified by immunogen affinity chromatography.   |
| Molecular Weight  | Predicted: 23; Observed: 30 kD  |
| Form/Buffer       | Liquid in 0.42% Potassium phosphate, 0.87% Sodium chloride, pH 7.3, 30% glycerol, and 0.01% sodium azide. |
| Alternative Names | Clathrin light chain B; Lcb   |
| Gene Symbol       | CLTB  |
| Entrez Gene       | 1212(Human); 74325(Mouse); 116561(Rat)  |
| SwissProt         | P09497(Human); Q6IRU5(Mouse); P08082(Rat)   |

\*AREX continuously optimizes our products. Webpage content may not reflect the latest updates. For inquiries, please contact [info@arexbio.com](mailto:info@arexbio.com) or your local distributor.

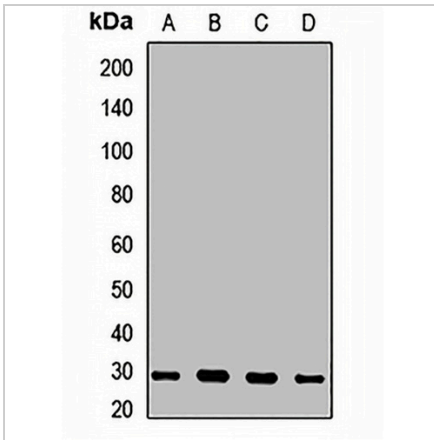
\*Clone Number, Reactivity, Source/Host and Clonality can be found in the product name and Key Features section above.

**DATASHEET**

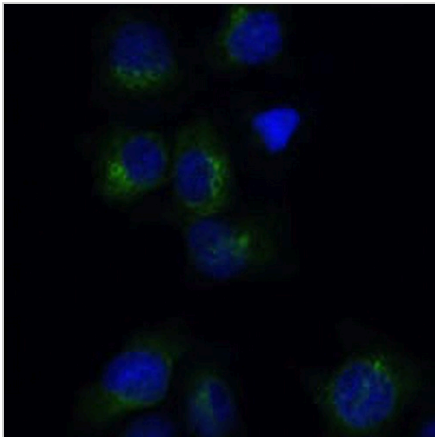
**Clathrin Light Chain B Rabbit Polyclonal Antibody**

CAT. NO. APA14749

**DATA**



Western blot analysis of Clathrin Light Chain B expression in A549 (A), MCF7 (B), NIH3T3 (C), mouse lung (D) whole cell lysates. (Predicted band size: 23; 25 kD; Observed band size: 30 kD)



Immunofluorescent analysis of Clathrin Light Chain B staining in HeLa cells. Formalin-fixed cells were permeabilized with 0.1% Triton X-100 in TBS for 5-10 minutes and blocked with 3% BSA-PBS for 30 minutes at room temperature. Cells were probed with the primary antibody in 3% BSA-PBS and incubated overnight at 4 °C in a humidified chamber. Cells were washed with PBST and incubated with a AREX® Fluor 488 - conjugated secondary antibody (green) in PBS at room temperature in the dark. DAPI was used to stain the cell nuclei (blue).

**STORAGE**

Store at 4°C short term. For long term storage, store at -20°C, avoiding freeze/thaw cycles.

**NOTE**

For Research Use Only. Not for diagnostic, therapeutics, prophylactic or in vivo use.