

## DATASHEET

# Ferrochelatase Rabbit Polyclonal Antibody

CAT. NO. APA14751

### KEY FEATURES

Target	Ferrochelatase	Source / Host	Rabbit
Reactivity	Human, Mouse	Clonality	Polyclonal
Applications	WB, IHC, IF/ICC	Conjugation	Unconjugated
Form / Buffer	Liquid in 0.42% Potassium phosphate, 0.87% Sodium chloride, pH 7.3, 30% glycerol, and 0.01% sodium azide.		Storage at -20°C

### BACKGROUND

Catalyzes the ferrous insertion into protoporphyrin IX and participates in the terminal step in the heme biosynthetic pathway.

### APPLICATION

To ensure optimal assay performance, AREX recommends conducting reagent titration tailored to each testing system for optimal detection results.

WB	1:500 - 1:2000
IHC	1:50 - 1:200
IF/ICC	1:50 - 1:200

\*Results are sample-specific. Please refer to your local assay conditions and test parameters for reference.

### PRODUCT OVERVIEW

Description	Rabbit polyclonal antibody to Ferrochelatase
Specificity	Recognizes endogenous levels of Ferrochelatase protein.
Antibody Type	Primary antibody
Immunogen	Recombinant fusion protein of human Ferrochelatase
Purification	The antibody was purified by immunogen affinity chromatography.
Molecular Weight	Predicted: 47; Observed: 50 kD
Form/Buffer	Liquid in 0.42% Potassium phosphate, 0.87% Sodium chloride, pH 7.3, 30% glycerol, and 0.01% sodium azide.
Alternative Names	Ferrochelatase mitochondrial; Heme synthase; Protoheme ferro-lyase
Gene Symbol	FECH
Entrez Gene	2235(Human)
SwissProt	P22830(Human); P22315(Mouse)

\*AREX continuously optimizes our products. Webpage content may not reflect the latest updates. For inquiries, please contact [info@arexbio.com](mailto:info@arexbio.com) or your local distributor.

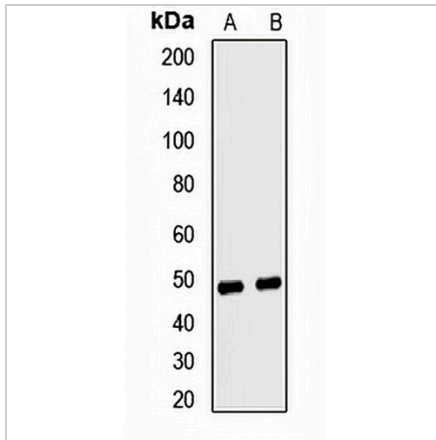
\*Clone Number, Reactivity, Source/Host and Clonality can be found in the product name and Key Features section above.

**DATASHEET**

**Ferrochelatase Rabbit Polyclonal Antibody**

CAT. NO. APA14751

**DATA**



Western blot analysis of Ferrochelatase expression in HT29 (A), mouse brain (B) whole cell lysates. (Predicted band size: 47; 48 kD; Observed band size: 50 kD)

Data 2

Immunohistochemical analysis of Ferrochelatase staining in human lung cancer formalin fixed paraffin embedded tissue section. The section was pre-treated using heat mediated antigen retrieval with sodium citrate buffer (pH 6.0). The section was then incubated with the antibody at room temperature and detected using an HRP conjugated compact polymer system. DAB was used as the chromogen. The section was then counterstained with haematoxylin and mounted with DPX.

**STORAGE**

Store at 4°C short term. For long term storage, store at -20°C, avoiding freeze/thaw cycles.

**NOTE**

For Research Use Only. Not for diagnostic, therapeutics, prophylactic or in vivo use.