

**DATASHEET**

**GBA Rabbit Polyclonal Antibody**

CAT. NO. APA14752

**KEY FEATURES**

Target	GBA	Source / Host	Rabbit
Reactivity	Human, Rat	Clonality	Polyclonal
Applications	WB	Conjugation	Unconjugated
Form / Buffer	Liquid in 0.42% Potassium phosphate, 0.87% Sodium chloride, pH 7.3, 30% glycerol, and 0.01% sodium azide.		Storage at-20°C

**BACKGROUND**

Glucosylceramidase that catalyzes, within the lysosomal compartment, the hydrolysis of glucosylceramides/GlcCers (such as beta-D-glucosyl-(1->1')-N-acylsphing-4-ene) into free ceramides (such as N-acylsphing-4-ene) and glucose -N-acylsphing-4-ene) into free ceramides (such as N-acylsphing-4-ene) and glucose . Plays a central role in the degradation of complex lipids and the turnover of cellular membranes . Through the production of ceramides, participates in the PKC-activated salvage pathway of ceramide formation . Catalyzes the glucosylation of cholesterol, through a transglucosylation reaction where glucose is transferred from GlcCer to cholesterol .

**APPLICATION**

To ensure optimal assay performance, AREX recommends conducting reagent titration tailored to each testing system for optimal detection results.

WB	1:500 - 1:2000
----	----------------

\*Results are sample-specific. Please refer to your local assay conditions and test parameters for reference.

**PRODUCT OVERVIEW**

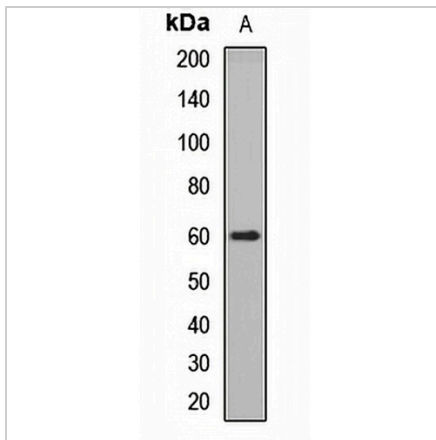
Description	Rabbit polyclonal antibody to GBA
Specificity	Recognizes endogenous levels of GBA protein.
Antibody Type	Primary antibody
Immunogen	Recombinant fusion protein of human GBA
Purification	The antibody was purified by immunogen affinity chromatography.
Molecular Weight	Predicted: 29; Observed: 60 kD
Form/Buffer	Liquid in 0.42% Potassium phosphate, 0.87% Sodium chloride, pH 7.3, 30% glycerol, and 0.01% sodium azide.
Alternative Names	GC; GLUC; Glucosylceramidase; Acid beta-glucosidase; Alglucerase; Beta-glucocerebrosidase; Beta-GC; D-glucosyl-N-acylsphingosine glucohydrolase; Imiglucerase
Gene Symbol	GBA
Entrez Gene	2629(Human)
SwissProt	P04062(Human)

\*AREX continuously optimizes our products. Webpage content may not reflect the latest updates. For inquiries, please contact [info@arexbio.com](mailto:info@arexbio.com) or your local distributor.

\*Clone Number, Reactivity, Source/Host and Clonality can be found in the product name and Key Features section above.

**DATASHEET****GBA Rabbit Polyclonal Antibody**

CAT. NO. APA14752

**DATA**

Western blot analysis of GBA expression in MCF7 (A) whole cell lysates. (Predicted band size: 29; 50; 54; 57; 59 kD; Observed band size: 60 kD)

**STORAGE**

Store at 4°C short term. For long term storage, store at -20°C, avoiding freeze/thaw cycles.

**NOTE**

For Research Use Only. Not for diagnostic, therapeutics, prophylactic or in vivo use.