

**DATASHEET**

**Integrin beta 8 Rabbit Polyclonal Antibody**

CAT. NO. APA14760

**KEY FEATURES**

Target	Integrin beta 8	Source / Host	Rabbit
Reactivity	Human, Mouse, Rat	Clonality	Polyclonal
Applications	WB	Conjugation	Unconjugated
Form / Buffer	Liquid in 0.42% Potassium phosphate, 0.87% Sodium chloride, pH 7.3, 30% glycerol, and 0.01% sodium azide.		Storage at-20°C

**BACKGROUND**

Integrin alpha-V:beta-8 (ITGAV:ITGB8) is a receptor for fibronectin . It recognizes the sequence R-G-D in its ligands . Integrin alpha-V:beta-6 (ITGAV:ITGB6) mediates R-G-D-dependent release of transforming growth factor beta-1 (TGF-beta-1) from regulatory Latency-associated peptide (LAP), thereby playing a key role in TGF-beta-1 activation on the surface of activated regulatory T-cells (Tregs) (Probable). Required during vasculogenesis .

**APPLICATION**

To ensure optimal assay performance, AREX recommends conducting reagent titration tailored to each testing system for optimal detection results.

WB	1:500 - 1:1000
----	----------------

\*Results are sample-specific. Please refer to your local assay conditions and test parameters for reference.

**PRODUCT OVERVIEW**

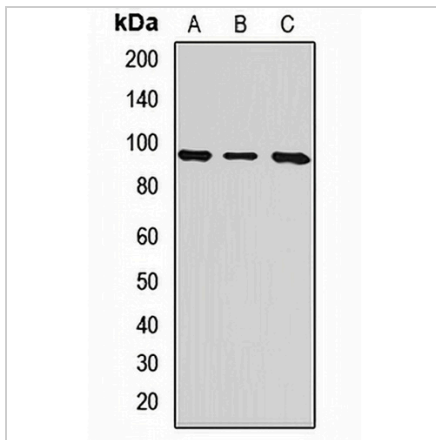
Description	Rabbit polyclonal antibody to Integrin beta 8
Specificity	Recognizes endogenous levels of Integrin beta 8 protein.
Antibody Type	Primary antibody
Immunogen	Recombinant fusion protein of human Integrin beta 8
Purification	The antibody was purified by immunogen affinity chromatography.
Molecular Weight	Predicted: 71; Observed: 90 kD
Form/Buffer	Liquid in 0.42% Potassium phosphate, 0.87% Sodium chloride, pH 7.3, 30% glycerol, and 0.01% sodium azide.
Alternative Names	Integrin beta-8
Gene Symbol	ITGB8
Entrez Gene	3696(Human)
SwissProt	P26012(Human)

\*AREX continuously optimizes our products. Webpage content may not reflect the latest updates. For inquiries, please contact [info@arexbio.com](mailto:info@arexbio.com) or your local distributor.

\*Clone Number, Reactivity, Source/Host and Clonality can be found in the product name and Key Features section above.

**DATASHEET****Integrin beta 8 Rabbit Polyclonal Antibody**

CAT. NO. APA14760

**DATA**

Western blot analysis of Integrin beta 8 expression in HeLa (A), mouse brain (B), rat brain (C) whole cell lysates. (Predicted band size: 71; 85 kD; Observed band size: 90 kD)

**STORAGE**

Store at 4°C short term. For long term storage, store at -20°C, avoiding freeze/thaw cycles.

**NOTE**

For Research Use Only. Not for diagnostic, therapeutics, prophylactic or in vivo use.