

## DATASHEET

# MAT2A Rabbit Polyclonal Antibody

CAT. NO. APA14762

### KEY FEATURES

|               |   |               |                     |
|---------------|---|---------------|---------------------|
| Target        | MAT2A   | Source / Host | Rabbit              |
| Reactivity    | Human, Mouse, Rat   | Clonality     | Polyclonal          |
| Applications  | WB  | Conjugation   | Unconjugated        |
| Form / Buffer | Liquid in 0.42% Potassium phosphate, 0.87% Sodium chloride, pH 7.3, 30% glycerol, and 0.01% sodium azide. |               | Storage<br>at -20°C |

### BACKGROUND

Catalyzes the formation of S-adenosylmethionine from methionine and ATP. The reaction comprises two steps that are both catalyzed by the same enzyme: formation of S-adenosylmethionine (AdoMet) and triphosphate, and subsequent hydrolysis of the triphosphate.

### APPLICATION

To ensure optimal assay performance, AREX recommends conducting reagent titration tailored to each testing system for optimal detection results.

|    |                |
|----|----------------|
| WB | 1:500 - 1:2000 |
|----|----------------|

\*Results are sample-specific. Please refer to your local assay conditions and test parameters for reference.

### PRODUCT OVERVIEW

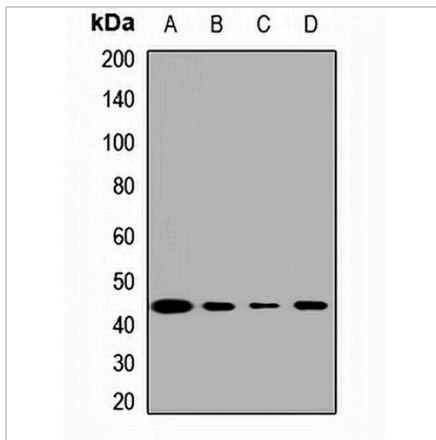
|                   |  |
|-------------------|--|
| Description       | Rabbit polyclonal antibody to MAT2A  |
| Specificity       | Recognizes endogenous levels of MAT2A protein.   |
| Antibody Type     | Primary antibody   |
| Immunogen         | Recombinant fusion protein of human MAT2A  |
| Purification      | The antibody was purified by immunogen affinity chromatography.  |
| Molecular Weight  | Predicted: 32; Observed: 44 kD   |
| Form/Buffer       | Liquid in 0.42% Potassium phosphate, 0.87% Sodium chloride, pH 7.3, 30% glycerol, and 0.01% sodium azide.  |
| Alternative Names | AMS2; MATA2; S-adenosylmethionine synthase isoform type-2; AdoMet synthase 2; Methionine adenosyltransferase 2; MAT 2; Methionine adenosyltransferase II; MAT-II |
| Gene Symbol       | MAT2A  |
| Entrez Gene       | 4144(Human); 232087(Mouse); 171347(Rat)  |
| SwissProt         | P31153(Human); Q3THS6(Mouse); P18298(Rat)  |

\*AREX continuously optimizes our products. Webpage content may not reflect the latest updates. For inquiries, please contact [info@arexbio.com](mailto:info@arexbio.com) or your local distributor.

\*Clone Number, Reactivity, Source/Host and Clonality can be found in the product name and Key Features section above.

**DATASHEET****MAT2A Rabbit Polyclonal Antibody**

CAT. NO. APA14762

**DATA**

Western blot analysis of MAT2A expression in A549 (A), HeLa (B), mouse lung (C), rat kidney (D) whole cell lysates. (Predicted band size: 32; 43 kD; Observed band size: 44 kD)

**STORAGE**

Store at 4°C short term. For long term storage, store at -20°C, avoiding freeze/thaw cycles.

**NOTE**

For Research Use Only. Not for diagnostic, therapeutics, prophylactic or in vivo use.