

**DATASHEET**

**MYL1 Rabbit Polyclonal Antibody**

CAT. NO. APA14764

**KEY FEATURES**

Target	MYL1	Source / Host	Rabbit
Reactivity	Human, Mouse, Rat	Clonality	Polyclonal
Applications	WB	Conjugation	Unconjugated
Form / Buffer	Liquid in 0.42% Potassium phosphate, 0.87% Sodium chloride, pH 7.3, 30% glycerol, and 0.01% sodium azide.		Storage at -20°C

**BACKGROUND**

Non-regulatory myosin light chain required for proper formation and/or maintenance of myofibers, and thus appropriate muscle function.

**APPLICATION**

To ensure optimal assay performance, AREX recommends conducting reagent titration tailored to each testing system for optimal detection results.

WB	1:500 - 1:1000
----	----------------

\*Results are sample-specific. Please refer to your local assay conditions and test parameters for reference.

**PRODUCT OVERVIEW**

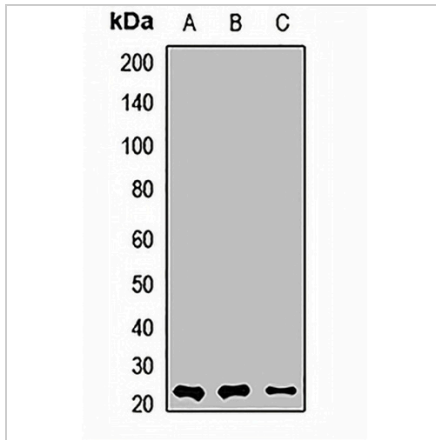
Description	Rabbit polyclonal antibody to MYL1
Specificity	Recognizes endogenous levels of MYL1 protein.
Antibody Type	Primary antibody
Immunogen	Recombinant fusion protein of human MYL1
Purification	The antibody was purified by immunogen affinity chromatography.
Molecular Weight	Predicted: 16; Observed: 25 kD
Form/Buffer	Liquid in 0.42% Potassium phosphate, 0.87% Sodium chloride, pH 7.3, 30% glycerol, and 0.01% sodium azide.
Alternative Names	Myosin light chain 1/3, skeletal muscle isoform; MLC1/MLC3; MLC1F/MLC3F; Myosin light chain alkali 1/2; Myosin light chain A1/A2
Gene Symbol	MYL1
Entrez Gene	4632(Human); 17901(Mouse); 56781(Rat)
SwissProt	P05976(Human); P05977(Mouse); P02600(Rat)

\*AREX continuously optimizes our products. Webpage content may not reflect the latest updates. For inquiries, please contact [info@arexbio.com](mailto:info@arexbio.com) or your local distributor.

\*Clone Number, Reactivity, Source/Host and Clonality can be found in the product name and Key Features section above.

**DATASHEET****MYL1 Rabbit Polyclonal Antibody**

CAT. NO. APA14764

**DATA**

Western blot analysis of MYL1 expression in HL60 (A), mouse heart (B), rat heart (C) whole cell lysates. (Predicted band size: 16; 21 kD; Observed band size: 25 kD)

**STORAGE**

Store at 4°C short term. For long term storage, store at -20°C, avoiding freeze/thaw cycles.

**NOTE**

For Research Use Only. Not for diagnostic, therapeutics, prophylactic or in vivo use.