

**DATASHEET**

**PDE3B Rabbit Polyclonal Antibody**

CAT. NO. APA14769

**KEY FEATURES**

Target	PDE3B	Source / Host	Rabbit
Reactivity	Human, Mouse, Rat	Clonality	Polyclonal
Applications	WB	Conjugation	Unconjugated
Form / Buffer	Liquid in 0.42% Potassium phosphate, 0.87% Sodium chloride, pH 7.3, 30% glycerol, and 0.01% sodium azide.		Storage at -20°C

**BACKGROUND**

Cyclic nucleotide phosphodiesterase with a dual-specificity for the second messengers cAMP and cGMP, which are key regulators of many important physiological processes. Regulates angiogenesis by inhibiting the cAMP-dependent guanine nucleotide exchange factor RAPGEF3 and downstream phosphatidylinositol 3-kinase gamma-mediated signaling. Controls cardiac contractility by reducing cAMP concentration in cardiocytes.

**APPLICATION**

To ensure optimal assay performance, AREX recommends conducting reagent titration tailored to each testing system for optimal detection results.

WB	1:500 - 1:2000
----	----------------

\*Results are sample-specific. Please refer to your local assay conditions and test parameters for reference.

**PRODUCT OVERVIEW**

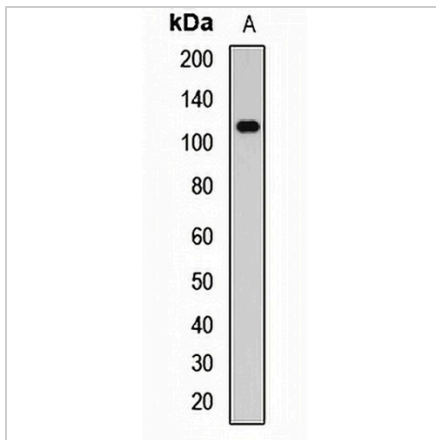
Description	Rabbit polyclonal antibody to PDE3B
Specificity	Recognizes endogenous levels of PDE3B protein.
Antibody Type	Primary antibody
Immunogen	Recombinant fusion protein of human PDE3B
Purification	The antibody was purified by immunogen affinity chromatography.
Molecular Weight	Predicted: 118; Observed: 115 kD
Form/Buffer	Liquid in 0.42% Potassium phosphate, 0.87% Sodium chloride, pH 7.3, 30% glycerol, and 0.01% sodium azide.
Alternative Names	cGMP-inhibited 3',5'-cyclic phosphodiesterase B; CGIPDE1; CGIP1; Cyclic GMP-inhibited phosphodiesterase B; CGI-PDE B
Gene Symbol	PDE3B
Entrez Gene	5140(Human); 18576(Mouse); 29516(Rat)
SwissProt	Q13370(Human); Q61409(Mouse); Q63085(Rat)

\*AREX continuously optimizes our products. Webpage content may not reflect the latest updates. For inquiries, please contact [info@arexbio.com](mailto:info@arexbio.com) or your local distributor.

\*Clone Number, Reactivity, Source/Host and Clonality can be found in the product name and Key Features section above.

**DATASHEET****PDE3B Rabbit Polyclonal Antibody**

CAT. NO. APA14769

**DATA**

Western blot analysis of PDE3B expression in mouse intestine (A) whole cell lysates.  
(Predicted band size: 118; 124 kD; Observed band size: 115 kD)

**STORAGE**

Store at 4°C short term. For long term storage, store at -20°C, avoiding freeze/thaw cycles.

**NOTE**

For Research Use Only. Not for diagnostic, therapeutics, prophylactic or in vivo use.