

**DATASHEET**

**HIRA Rabbit Polyclonal Antibody**

CAT. NO. APA14771

**KEY FEATURES**

Target	HIRA	Source / Host	Rabbit
Reactivity	Human	Clonality	Polyclonal
Applications	WB, IHC	Conjugation	Unconjugated
Form / Buffer	Liquid in 0.42% Potassium phosphate, 0.87% Sodium chloride, pH 7.3, 30% glycerol, and 0.01% sodium azide.		Storage at -20°C

**BACKGROUND**

Cooperates with ASF1A to promote replication-independent chromatin assembly. Required for the periodic repression of histone gene transcription during the cell cycle. Required for the formation of senescence-associated heterochromatin foci (SAHF) and efficient senescence-associated cell cycle exit.

**APPLICATION**

To ensure optimal assay performance, AREX recommends conducting reagent titration tailored to each testing system for optimal detection results.

WB	1:500 - 1:2000
IHC	1:50 - 1:200

\*Results are sample-specific. Please refer to your local assay conditions and test parameters for reference.

**PRODUCT OVERVIEW**

Description	Rabbit polyclonal antibody to HIRA
Specificity	Recognizes endogenous levels of HIRA protein.
Antibody Type	Primary antibody
Immunogen	Recombinant fusion protein of human HIRA
Purification	The antibody was purified by immunogen affinity chromatography.
Molecular Weight	Predicted: 89; Observed: 112 kD
Form/Buffer	Liquid in 0.42% Potassium phosphate, 0.87% Sodium chloride, pH 7.3, 30% glycerol, and 0.01% sodium azide.
Alternative Names	DGCR1; HIR; TUPLE1; Protein HIRA; TUP1-like enhancer of split protein 1
Gene Symbol	HIRA
Entrez Gene	7290(Human)
SwissProt	P54198(Human)

\*AREX continuously optimizes our products. Webpage content may not reflect the latest updates. For inquiries, please contact [info@arexbio.com](mailto:info@arexbio.com) or your local distributor.

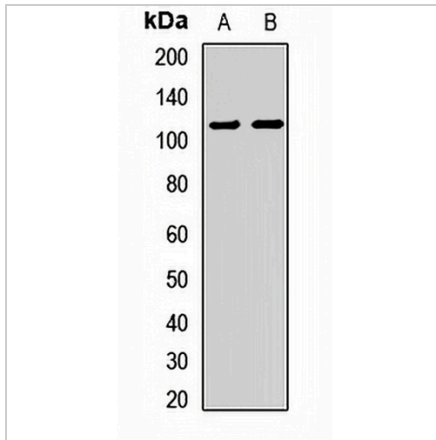
\*Clone Number, Reactivity, Source/Host and Clonality can be found in the product name and Key Features section above.

**DATASHEET**

**HIRA Rabbit Polyclonal Antibody**

CAT. NO. APA14771

**DATA**



Western blot analysis of HIRA expression in HepG2 (A), HeLa (B) whole cell lysates. (Predicted band size: 89; 111 kD; Observed band size: 112 kD)

Data 2

Immunohistochemical analysis of HIRA staining in human breast cancer formalin fixed paraffin embedded tissue section. The section was pre-treated using heat mediated antigen retrieval with sodium citrate buffer (pH 6.0). The section was then incubated with the antibody at room temperature and detected using an HRP conjugated compact polymer system. DAB was used as the chromogen. The section was then counterstained with haematoxylin and mounted with DPX.

**STORAGE**

Store at 4°C short term. For long term storage, store at -20°C, avoiding freeze/thaw cycles.

**NOTE**

For Research Use Only. Not for diagnostic, therapeutics, prophylactic or in vivo use.