

DATASHEET

CHRNA6 Rabbit Polyclonal Antibody

CAT. NO. APA14774

KEY FEATURES

| | | | |
|---------------|---|---------------|---------------------|
| Target | CHRNA6 | Source / Host | Rabbit |
| Reactivity | Human, Mouse, Rat | Clonality | Polyclonal |
| Applications | WB | Conjugation | Unconjugated |
| Form / Buffer | Liquid in 0.42% Potassium phosphate, 0.87% Sodium chloride, pH 7.3, 30% glycerol, and 0.01% sodium azide. | | Storage at -20°C |

BACKGROUND

Component of neuronal acetylcholine receptors (nAChRs) that function as pentameric, ligand-gated cation channels with high calcium permeability among other activities. nAChRs are excitatory neurotransmitter receptors formed by a collection of nAChR subunits known to mediate synaptic transmission in the nervous system and the neuromuscular junction. Each nAChR subunit confers differential attributes to channel properties, including activation, deactivation and desensitization kinetics, pH sensitivity, cation permeability, and binding to allosteric modulators (Probable).

APPLICATION

To ensure optimal assay performance, AREX recommends conducting reagent titration tailored to each testing system for optimal detection results.

| | |
|----|----------------|
| WB | 1:500 - 1:2000 |
|----|----------------|

*Results are sample-specific. Please refer to your local assay conditions and test parameters for reference.

PRODUCT OVERVIEW

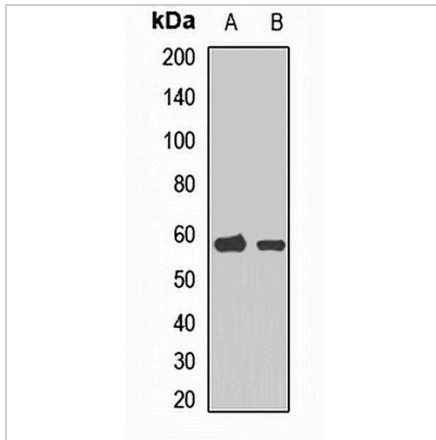
| | |
|-------------------|---|
| Description | Rabbit polyclonal antibody to CHRNA6 |
| Specificity | Recognizes endogenous levels of CHRNA6 protein. |
| Antibody Type | Primary antibody |
| Immunogen | Recombinant fusion protein of human CHRNA6 |
| Purification | The antibody was purified by immunogen affinity chromatography. |
| Molecular Weight | Predicted: 55; Observed: 57 kD |
| Form/Buffer | Liquid in 0.42% Potassium phosphate, 0.87% Sodium chloride, pH 7.3, 30% glycerol, and 0.01% sodium azide. |
| Alternative Names | Neuronal acetylcholine receptor subunit alpha-6 |
| Gene Symbol | CHRNA6 |
| Entrez Gene | 8973(Human); 11440(Mouse); 81721(Rat) |
| SwissProt | Q15825(Human); Q9R0W9(Mouse); P43143(Rat) |

*AREX continuously optimizes our products. Webpage content may not reflect the latest updates. For inquiries, please contact info@arexbio.com or your local distributor.

*Clone Number, Reactivity, Source/Host and Clonality can be found in the product name and Key Features section above.

DATASHEET**CHRNA6 Rabbit Polyclonal Antibody**

CAT. NO. APA14774

DATA

Western blot analysis of CHRNA6 expression in mouse liver (A), mouse heart (B) whole cell lysates. (Predicted band size: 55; 56 kD; Observed band size: 57 kD)

STORAGE

Store at 4°C short term. For long term storage, store at -20°C, avoiding freeze/thaw cycles.

NOTE

For Research Use Only. Not for diagnostic, therapeutics, prophylactic or in vivo use.