

**DATASHEET**

**SLC13A2 Rabbit Polyclonal Antibody**

CAT. NO. APA14775

**KEY FEATURES**

Target	SLC13A2	Source / Host	Rabbit
Reactivity	Human, Mouse, Rat	Clonality	Polyclonal
Applications	WB	Conjugation	Unconjugated
Form / Buffer	Liquid in 0.42% Potassium phosphate, 0.87% Sodium chloride, pH 7.3, 30% glycerol, and 0.01% sodium azide.		Storage at -20°C

**BACKGROUND**

Low-affinity sodium-dicarboxylate cotransporter, that mediates the entry of citric acid cycle intermediates, such as succinate, citrate, fumarate and alpha-ketoglutarate (2-oxoglutarate) into the small intestine and renal proximal tubule into the small intestine and renal proximal tubule . Transports the dicarboxylate into the cell with a probable stoichiometry of 3 Na(+) for 1 divalent dicarboxylate, rendering the process electrogenic . Citrate is transported in protonated form as a divalent anion, rather than the trivalent form which is normally found in blood . Has a critical role in renal dicarboxylate transport .

**APPLICATION**

To ensure optimal assay performance, AREX recommends conducting reagent titration tailored to each testing system for optimal detection results.

WB	1:500 - 1:2000
----	----------------

\*Results are sample-specific. Please refer to your local assay conditions and test parameters for reference.

**PRODUCT OVERVIEW**

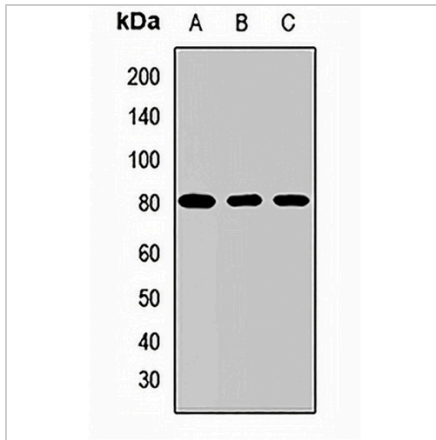
Description	Rabbit polyclonal antibody to SLC13A2
Specificity	Recognizes endogenous levels of SLC13A2 protein.
Antibody Type	Primary antibody
Immunogen	Recombinant fusion protein of human SLC13A2
Purification	The antibody was purified by immunogen affinity chromatography.
Molecular Weight	Predicted: 64; Observed: 80 kD
Form/Buffer	Liquid in 0.42% Potassium phosphate, 0.87% Sodium chloride, pH 7.3, 30% glycerol, and 0.01% sodium azide.
Alternative Names	NADC1; SDCT1; Solute carrier family 13 member 2; Na(+)/dicarboxylate cotransporter 1; NaDC-1; Renal sodium/dicarboxylate cotransporter
Gene Symbol	SLC13A2
Entrez Gene	9058(Human); 20500(Mouse)
SwissProt	Q13183(Human); Q9ES88(Mouse); P70545(Rat)

\*AREX continuously optimizes our products. Webpage content may not reflect the latest updates. For inquiries, please contact [info@arexbio.com](mailto:info@arexbio.com) or your local distributor.

\*Clone Number, Reactivity, Source/Host and Clonality can be found in the product name and Key Features section above.

**DATASHEET****SLC13A2 Rabbit Polyclonal Antibody**

CAT. NO. APA14775

**DATA**

Western blot analysis of SLC13A2 expression in MCF7 (A), mouse liver (B), rat kidney (C) whole cell lysates. (Predicted band size: 64; 69 kD; Observed band size: 80 kD)

**STORAGE**

Store at 4°C short term. For long term storage, store at -20°C, avoiding freeze/thaw cycles.

**NOTE**

For Research Use Only. Not for diagnostic, therapeutics, prophylactic or in vivo use.