

## DATASHEET

# PATJ Rabbit Polyclonal Antibody

CAT. NO. APA14776

### KEY FEATURES

Target	PATJ	Source / Host	Rabbit
Reactivity	Human, Mouse	Clonality	Polyclonal
Applications	WB	Conjugation	Unconjugated
Form / Buffer	Liquid in 0.42% Potassium phosphate, 0.87% Sodium chloride, pH 7.3, 30% glycerol, and 0.01% sodium azide.		Storage at -20°C

### BACKGROUND

Scaffolding protein that facilitates the localization of proteins to the cell membrane . Required for the correct formation of tight junctions and epithelial apico-basal polarity . Acts (via its L27 domain) as an apical connector and elongation factor for multistranded TJP1/ZO1 condensates that form a tight junction belt, thereby required for the formation of the tight junction-mediated cell barrier . Positively regulates epithelial cell microtubule elongation and cell migration, possibly via facilitating localization of PRKCI/aPKC and PAR3D/PAR3 at the leading edge of migrating cells . Plays a role in the correct reorientation of the microtubule-organizing center during epithelial migration . May regulate the surface expression and/or function of ASIC3 in sensory neurons .

### APPLICATION

To ensure optimal assay performance, AREX recommends conducting reagent titration tailored to each testing system for optimal detection results.

WB	1:500 - 1:1000
----	----------------

\*Results are sample-specific. Please refer to your local assay conditions and test parameters for reference.

### PRODUCT OVERVIEW

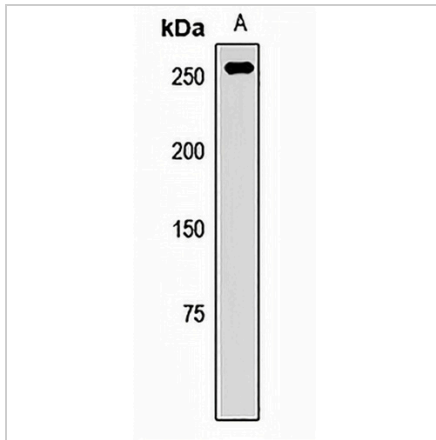
Description	Rabbit polyclonal antibody to PATJ
Specificity	Recognizes endogenous levels of PATJ protein.
Antibody Type	Primary antibody
Immunogen	Recombinant fusion protein of human PATJ
Purification	The antibody was purified by immunogen affinity chromatography.
Molecular Weight	Predicted: 125; Observed: 255 kD
Form/Buffer	Liquid in 0.42% Potassium phosphate, 0.87% Sodium chloride, pH 7.3, 30% glycerol, and 0.01% sodium azide.
Alternative Names	PATJ; InaD-like protein; Inadl protein; hINADL; Pals1-associated tight junction protein; Protein associated to tight junctions
Gene Symbol	INADL
Entrez Gene	10207(Human); 12695(Mouse)
SwissProt	Q8NI35(Human); Q63ZW7(Mouse)

\*AREX continuously optimizes our products. Webpage content may not reflect the latest updates. For inquiries, please contact [info@arexbio.com](mailto:info@arexbio.com) or your local distributor.

\*Clone Number, Reactivity, Source/Host and Clonality can be found in the product name and Key Features section above.

**DATASHEET****PATJ Rabbit Polyclonal Antibody**

CAT. NO. APA14776

**DATA**

Western blot analysis of PATJ expression in A431 (A) whole cell lysates. (Predicted band size: 125; 167; 170; 173; 196 kD; Observed band size: 255 kD)

**STORAGE**

Store at 4°C short term. For long term storage, store at -20°C, avoiding freeze/thaw cycles.

**NOTE**

For Research Use Only. Not for diagnostic, therapeutics, prophylactic or in vivo use.