

DATASHEET

Tim17B Rabbit Polyclonal Antibody

CAT. NO. APA14777

KEY FEATURES

Target	Tim17B	Source / Host	Rabbit
Reactivity	Human, Mouse	Clonality	Polyclonal
Applications	WB	Conjugation	Unconjugated
Form / Buffer	Liquid in 0.42% Potassium phosphate, 0.87% Sodium chloride, pH 7.3, 30% glycerol, and 0.01% sodium azide.		Storage at-20°C

BACKGROUND

Essential component of the TIM23 complex, a complex that mediates the translocation of transit peptide-containing proteins across the mitochondrial inner membrane.

APPLICATION

To ensure optimal assay performance, AREX recommends conducting reagent titration tailored to each testing system for optimal detection results.

WB	1:500 - 1:2000
----	----------------

*Results are sample-specific. Please refer to your local assay conditions and test parameters for reference.

PRODUCT OVERVIEW

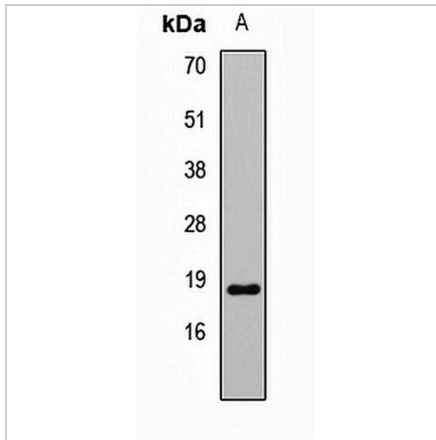
Description	Rabbit polyclonal antibody to Tim17B
Specificity	Recognizes endogenous levels of Tim17B protein.
Antibody Type	Primary antibody
Immunogen	Recombinant fusion protein of human Tim17B
Purification	The antibody was purified by immunogen affinity chromatography.
Molecular Weight	Predicted: 18; Observed: 18 kD
Form/Buffer	Liquid in 0.42% Potassium phosphate, 0.87% Sodium chloride, pH 7.3, 30% glycerol, and 0.01% sodium azide.
Alternative Names	TIM17B; Mitochondrial import inner membrane translocase subunit Tim17-B
Gene Symbol	TIMM17B
Entrez Gene	10245(Human); 21855(Mouse)
SwissProt	O60830(Human); Q9Z0V7(Mouse)

*AREX continuously optimizes our products. Webpage content may not reflect the latest updates. For inquiries, please contact info@arexbio.com or your local distributor.

*Clone Number, Reactivity, Source/Host and Clonality can be found in the product name and Key Features section above.

DATASHEET**Tim17B Rabbit Polyclonal Antibody**

CAT. NO. APA14777

DATA

Western blot analysis of Tim17B expression in mouse heart (A) whole cell lysates.
(Predicted band size: 18; 23 kD; Observed band size: 18 kD)

STORAGE

Store at 4°C short term. For long term storage, store at -20°C, avoiding freeze/thaw cycles.

NOTE

For Research Use Only. Not for diagnostic, therapeutics, prophylactic or in vivo use.