

DATASHEET

Tim9B Rabbit Polyclonal Antibody

CAT. NO. APA14780

KEY FEATURES

Target	Tim9B	Source / Host	Rabbit
Reactivity	Human, Mouse, Rat	Clonality	Polyclonal
Applications	WB, IHC	Conjugation	Unconjugated
Form / Buffer	Liquid in 0.42% Potassium phosphate, 0.87% Sodium chloride, pH 7.3, 30% glycerol, and 0.01% sodium azide.		Storage at -20°C

BACKGROUND

Component of the TIM22 complex, a complex that mediates the import and insertion of multi-pass transmembrane proteins into the mitochondrial inner membrane. The TIM22 complex forms a twin-pore translocase that uses the membrane potential as the external driving force. In the TIM22 complex, it may act as a docking point for the soluble 70 kDa complex that guides the target proteins in transit through the aqueous mitochondrial intermembrane space.

APPLICATION

To ensure optimal assay performance, AREX recommends conducting reagent titration tailored to each testing system for optimal detection results.

WB	1:500 - 1:2000
IHC	1:50 - 1:200

*Results are sample-specific. Please refer to your local assay conditions and test parameters for reference.

PRODUCT OVERVIEW

Description	Rabbit polyclonal antibody to Tim9B
Specificity	Recognizes endogenous levels of Tim9B protein.
Antibody Type	Primary antibody
Immunogen	Recombinant fusion protein of human Tim9B
Purification	The antibody was purified by immunogen affinity chromatography.
Molecular Weight	Predicted: 11 kD; Observed: 24 kD
Form/Buffer	Liquid in 0.42% Potassium phosphate, 0.87% Sodium chloride, pH 7.3, 30% glycerol, and 0.01% sodium azide.
Alternative Names	FXC1; TIM9B; TIMM9B; Mitochondrial import inner membrane translocase subunit Tim10 B; Fracture callus protein 1; FxC1; Mitochondrial import inner membrane translocase subunit Tim9 B; TIMM10B; Tim10b
Gene Symbol	TIMM10B
Entrez Gene	26515(Human); 14356(Mouse); 84384(Rat)
SwissProt	Q9Y5J6(Human); Q9WV96(Mouse); Q9R1B1(Rat)

*AREX continuously optimizes our products. Webpage content may not reflect the latest updates. For inquiries, please contact info@arexbio.com or your local distributor.

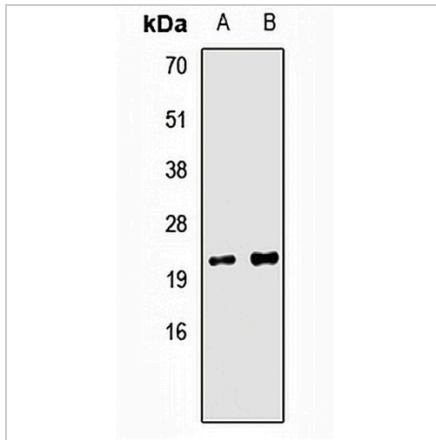
*Clone Number, Reactivity, Source/Host and Clonality can be found in the product name and Key Features section above.

DATASHEET

Tim9B Rabbit Polyclonal Antibody

CAT. NO. APA14780

DATA



Western blot analysis of Tim9B expression in HepG2 (A), HT1080 (B) whole cell lysates. (Predicted band size: 11 kD; Observed band size: 24 kD)

Data 2

Immunohistochemical analysis of Tim9B staining in human breast cancer formalin fixed paraffin embedded tissue section. The section was pre-treated using heat mediated antigen retrieval with sodium citrate buffer (pH 6.0). The section was then incubated with the antibody at room temperature and detected using an HRP conjugated compact polymer system. DAB was used as the chromogen. The section was then counterstained with haematoxylin and mounted with DPX.

STORAGE

Store at 4°C short term. For long term storage, store at -20°C, avoiding freeze/thaw cycles.

NOTE

For Research Use Only. Not for diagnostic, therapeutics, prophylactic or in vivo use.