

**DATASHEET**

**CCDC41 Rabbit Polyclonal Antibody**

CAT. NO. APA14782

**KEY FEATURES**

Target	CCDC41	Source / Host	Rabbit
Reactivity	Human, Mouse, Rat	Clonality	Polyclonal
Applications	WB	Conjugation	Unconjugated
Form / Buffer	Liquid in 0.42% Potassium phosphate, 0.87% Sodium chloride, pH 7.3, 30% glycerol, and 0.01% sodium azide.		Storage at-20°C

**BACKGROUND**

Component of the distal appendage region of the centriole involved in the initiation of primary cilium assembly. May collaborate with IFT20 in the trafficking of ciliary membrane proteins from the Golgi complex to the cilium during the initiation of primary cilium assembly.

**APPLICATION**

To ensure optimal assay performance, AREX recommends conducting reagent titration tailored to each testing system for optimal detection results.

WB	1:500 - 1:2000
----	----------------

\*Results are sample-specific. Please refer to your local assay conditions and test parameters for reference.

**PRODUCT OVERVIEW**

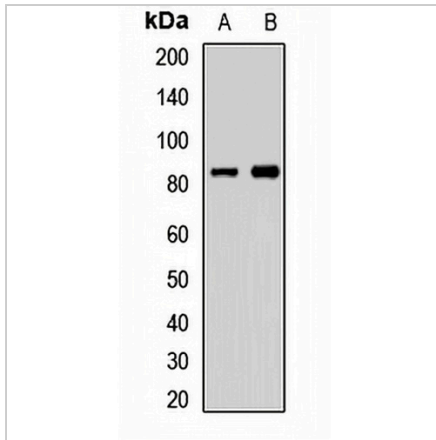
Description	Rabbit polyclonal antibody to CCDC41
Specificity	Recognizes endogenous levels of CCDC41 protein.
Antibody Type	Primary antibody
Immunogen	Recombinant fusion protein of human CCDC41
Purification	The antibody was purified by immunogen affinity chromatography.
Molecular Weight	Predicted: 67; Observed: 82 kD
Form/Buffer	Liquid in 0.42% Potassium phosphate, 0.87% Sodium chloride, pH 7.3, 30% glycerol, and 0.01% sodium azide.
Alternative Names	CEP83; Centrosomal protein of 83 kDa; Cep83; Coiled-coil domain-containing protein 41; Renal carcinoma antigen NY-REN-58
Gene Symbol	CCDC41
Entrez Gene	51134(Human); 77048(Mouse); 366872(Rat)
SwissProt	Q9Y592(Human); Q9D5R3(Mouse); Q66H89(Rat)

\*AREX continuously optimizes our products. Webpage content may not reflect the latest updates. For inquiries, please contact [info@arexbio.com](mailto:info@arexbio.com) or your local distributor.

\*Clone Number, Reactivity, Source/Host and Clonality can be found in the product name and Key Features section above.

**DATASHEET****CCDC41 Rabbit Polyclonal Antibody**

CAT. NO. APA14782

**DATA**

Western blot analysis of CCDC41 expression in HT29 (A), mouse lung (B) whole cell lysates. (Predicted band size: 67; 82 kD; Observed band size: 82 kD)

**STORAGE**

Store at 4°C short term. For long term storage, store at -20°C, avoiding freeze/thaw cycles.

**NOTE**

For Research Use Only. Not for diagnostic, therapeutics, prophylactic or in vivo use.