

DATASHEET

FAM20A Rabbit Polyclonal Antibody

CAT. NO. APA14783

KEY FEATURES

Target	FAM20A	Source / Host	Rabbit
Reactivity	Human	Clonality	Polyclonal
Applications	WB, IHC	Conjugation	Unconjugated
Form / Buffer	Liquid in 0.42% Potassium phosphate, 0.87% Sodium chloride, pH 7.3, 30% glycerol, and 0.01% sodium azide.		Storage at -20°C

BACKGROUND

Pseudokinase that acts as an allosteric activator of the Golgi serine/threonine protein kinase FAM20C and is involved in biomineralization of teeth. Forms a complex with FAM20C and increases the ability of FAM20C to phosphorylate the proteins that form the 'matrix' that guides the deposition of the enamel minerals.

APPLICATION

To ensure optimal assay performance, AREX recommends conducting reagent titration tailored to each testing system for optimal detection results.

WB	1:500 - 1:2000
IHC	1:50 - 1:200

*Results are sample-specific. Please refer to your local assay conditions and test parameters for reference.

PRODUCT OVERVIEW

Description	Rabbit polyclonal antibody to FAM20A
Specificity	Recognizes endogenous levels of FAM20A protein.
Antibody Type	Primary antibody
Immunogen	Recombinant fusion protein of human FAM20A
Purification	The antibody was purified by immunogen affinity chromatography.
Molecular Weight	Predicted: 61 kD; Observed: 54 kD
Form/Buffer	Liquid in 0.42% Potassium phosphate, 0.87% Sodium chloride, pH 7.3, 30% glycerol, and 0.01% sodium azide.
Alternative Names	Protein FAM20A
Gene Symbol	FAM20A
Entrez Gene	54757(Human); 208659(Mouse)
SwissProt	Q96MK3(Human); Q8CID3(Mouse)

*AREX continuously optimizes our products. Webpage content may not reflect the latest updates. For inquiries, please contact info@arexbio.com or your local distributor.

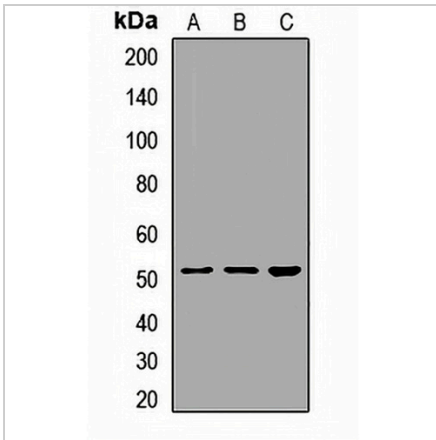
*Clone Number, Reactivity, Source/Host and Clonality can be found in the product name and Key Features section above.

DATASHEET

FAM20A Rabbit Polyclonal Antibody

CAT. NO. APA14783

DATA



Western blot analysis of FAM20A expression in SHSY5Y (A), mouse brain (B), rat liver (C) whole cell lysates. (Predicted band size: 61 kD; Observed band size: 54 kD)

Data 2

Immunohistochemical analysis of FAM20A staining in human lung cancer formalin fixed paraffin embedded tissue section. The section was pre-treated using heat mediated antigen retrieval with sodium citrate buffer (pH 6.0). The section was then incubated with the antibody at room temperature and detected using an HRP conjugated compact polymer system. DAB was used as the chromogen. The section was then counterstained with haematoxylin and mounted with DPX.

STORAGE

Store at 4°C short term. For long term storage, store at -20°C, avoiding freeze/thaw cycles.

NOTE

For Research Use Only. Not for diagnostic, therapeutics, prophylactic or in vivo use.