

DATASHEET

ATG2B Rabbit Polyclonal Antibody

CAT. NO. APA14785

KEY FEATURES

Target	ATG2B	Source / Host	Rabbit
Reactivity	Human, Mouse, Rat	Clonality	Polyclonal
Applications	WB	Conjugation	Unconjugated
Form / Buffer	Liquid in 0.42% Potassium phosphate, 0.87% Sodium chloride, pH 7.3, 30% glycerol, and 0.01% sodium azide.		Storage at -20°C

BACKGROUND

Lipid transfer protein required for both autophagosome formation and regulation of lipid droplet morphology and dispersion . Tethers the edge of the isolation membrane (IM) to the endoplasmic reticulum (ER) and mediates direct lipid transfer from ER to IM for IM expansion . Binds to the ER exit site (ERES), which is the membrane source for autophagosome formation, and extracts phospholipids from the membrane source and transfers them to ATG9 (ATG9A or ATG9B) to the IM for membrane expansion . Lipid transfer activity is enhanced by WDR45/WIPI4, which promotes ATG2B-association with phosphatidylinositol 3-monophosphate (PI3P)-containing membranes .

APPLICATION

To ensure optimal assay performance, AREX recommends conducting reagent titration tailored to each testing system for optimal detection results.

WB	1:500 - 1:2000
----	----------------

*Results are sample-specific. Please refer to your local assay conditions and test parameters for reference.

PRODUCT OVERVIEW

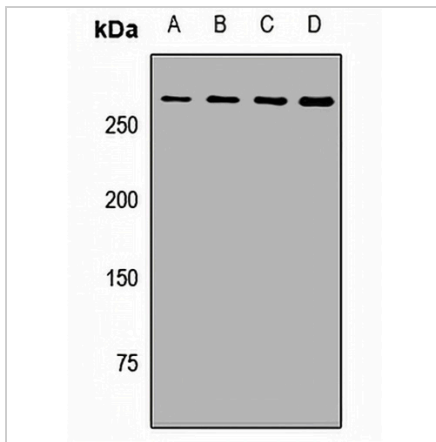
Description	Rabbit polyclonal antibody to ATG2B
Specificity	Recognizes endogenous levels of ATG2B protein.
Antibody Type	Primary antibody
Immunogen	Recombinant fusion protein of human ATG2B
Purification	The antibody was purified by immunogen affinity chromatography.
Molecular Weight	Predicted: 232 kD; Observed: 270 kD
Form/Buffer	Liquid in 0.42% Potassium phosphate, 0.87% Sodium chloride, pH 7.3, 30% glycerol, and 0.01% sodium azide.
Alternative Names	C14orf103; Autophagy-related protein 2 homolog B
Gene Symbol	ATG2B
Entrez Gene	55102(Human); 76559(Mouse)
SwissProt	Q96BY7(Human); Q80XK6(Mouse)

*AREX continuously optimizes our products. Webpage content may not reflect the latest updates. For inquiries, please contact info@arexbio.com or your local distributor.

*Clone Number, Reactivity, Source/Host and Clonality can be found in the product name and Key Features section above.

DATASHEET**ATG2B Rabbit Polyclonal Antibody**

CAT. NO. APA14785

DATA

Western blot analysis of ATG2B expression in MCF7 (A), A549 (B), mouse kidney (C), rat liver (D) whole cell lysates. (Predicted band size: 232 kD; Observed band size: 270 kD)

STORAGE

Store at 4°C short term. For long term storage, store at -20°C, avoiding freeze/thaw cycles.

NOTE

For Research Use Only. Not for diagnostic, therapeutics, prophylactic or in vivo use.