

DATASHEET

RARS2 Rabbit Polyclonal Antibody

CAT. NO. APA14786

KEY FEATURES

Target	RARS2	Source / Host	Rabbit
Reactivity	Human, Mouse	Clonality	Polyclonal
Applications	WB	Conjugation	Unconjugated
Form / Buffer	Liquid in 0.42% Potassium phosphate, 0.87% Sodium chloride, pH 7.3, 30% glycerol, and 0.01% sodium azide.		Storage at-20°C

BACKGROUND

Catalyzes the attachment of arginine to tRNA(Arg) in a two-step reaction: arginine is first activated by ATP to form Arg-AMP and then transferred to the acceptor end of tRNA(Arg).

APPLICATION

To ensure optimal assay performance, AREX recommends conducting reagent titration tailored to each testing system for optimal detection results.

WB	1:500 - 1:1000
----	----------------

*Results are sample-specific. Please refer to your local assay conditions and test parameters for reference.

PRODUCT OVERVIEW

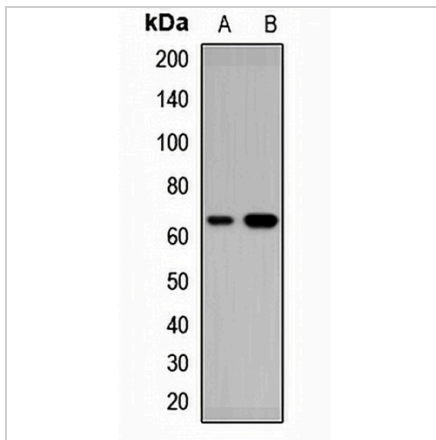
Description	Rabbit polyclonal antibody to RARS2
Specificity	Recognizes endogenous levels of RARS2 protein.
Antibody Type	Primary antibody
Immunogen	Recombinant fusion protein of human RARS2
Purification	The antibody was purified by immunogen affinity chromatography.
Molecular Weight	Predicted: 65 kD; Observed: 65 kD
Form/Buffer	Liquid in 0.42% Potassium phosphate, 0.87% Sodium chloride, pH 7.3, 30% glycerol, and 0.01% sodium azide.
Alternative Names	RARSL; Probable arginine--tRNA ligase mitochondrial; Arginyl-tRNA synthetase; ArgRS
Gene Symbol	RARS2
Entrez Gene	57038(Human); 109093(Mouse)
SwissProt	Q5T160(Human); Q3U186(Mouse)

*AREX continuously optimizes our products. Webpage content may not reflect the latest updates. For inquiries, please contact info@arexbio.com or your local distributor.

*Clone Number, Reactivity, Source/Host and Clonality can be found in the product name and Key Features section above.

DATASHEET**RARS2 Rabbit Polyclonal Antibody**

CAT. NO. APA14786

DATA

Western blot analysis of RARS2 expression in K562 (A), mouse kidney (B) whole cell lysates. (Predicted band size: 65 kD; Observed band size: 65 kD)

STORAGE

Store at 4°C short term. For long term storage, store at -20°C, avoiding freeze/thaw cycles.

NOTE

For Research Use Only. Not for diagnostic, therapeutics, prophylactic or in vivo use.